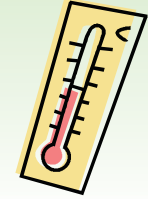




QUESTIONS TO ASK YOUR CUSTOMERS TO HELP ASSIST IN SELECTING PROPER PPE:

- How high is the temperature you're working with?
- How heavy is the object being held?
- How long is the exposure time?
- What is the abrasion factor?
- What was being used before and how effective was it?

FABRIC SELECTION



FOUNDRY PROTECTION

Foundry applications might require primary and/or secondary protective clothing. Primary clothing should be worn when subjected to significant exposure to molten splash, radiant heat or flame. Secondary protective clothing is designed for continuous wear for work activities with intermittent exposure or where exposure to sparks and flame would be less likely. If primary protective clothing is required, secondary clothing should be worn under it.

Primary Protection

Aluminized CarbonX®	Aluminized carbon Kevlar®
Aluminized Kevlar®	2 ply Twaron® Micro fiber
Aluminized Rayon®	Carbon Kevlar®

Secondary Protection

CarbonX®	Oasis™
FR cotton (Indura® or Proban®)	
Vinex® (non ferrous metals)	



WELDING PROTECTION

We provide welding protection in the form of clothing, blankets and screens. The intensity of welding will help determine the fabrics needed for protection. TIG welding would require less protection than high amp welding. Below are a list of materials that would protect from heavy, medium and light intensity welding.

Clothing

Leather (heavy)
Tuff Weld® (medium)
FR cotton, Indura® or Proban® (light)

Blankets

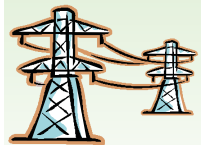
36 oz Silica (heavy)
35 oz Glass cloth (medium)
18 oz Heat cleaned glass (light)



FLAME PROTECTION

Government reports note that the majority of severe and fatal burn injuries are due to the individual's clothing igniting and continuing to burn, not by the exposure itself. Below are a list of flame resistant fabrics that are appropriate to be used as secondary protection from flame. The level of protection typically rests in the fabric weight and composition.

Indura® Ultra Soft® 7 oz, 9 oz or 12 oz	CarbonX® 7.7 oz, 10 oz or 11 oz
Indura® 7 oz, 9 oz or 12 oz	Nomex IIIA® 4.5 oz, 6 oz or 9.5 oz
Proban® 7 oz, 9 oz or 11 oz	



ARC FLASH PROTECTION

For Arc flash protective clothing we offer fabrics that have been tested to NFPA 70E specifications. Fabric weights and number of layers will dictate the level of protection that a fabric or fabric system offers. The end user must supply us with the level of protection they require. We do not calculate that for them.

Indura® Ultra Soft® (88% cotton, 12% Nylon) 8 cal, 12 cal, 20 cal, 36 cal, 40 cal and 51 cal
Twaron® Micro fiber and CarbonX® 107 cal
Master series 44 cal and 74 cal



CHEMICAL PROTECTION

We offer a variety of chemical resistant fabrics for aprons, sleeves, clothing and spats. Chemicals react very differently depending on their solution strength and temperature. Sample swatches of our fabrics are available for your own testing.

Hycar®, medium weight nitrile	VCF, Vinyl coated fiberglass
Neoprene, yellow	VCN, Vinyl coated Nylon
PVC, 16 oz green	



CUT PROTECTION

Our line of cut protective garments include jackets, aprons, sleeves and leggings.

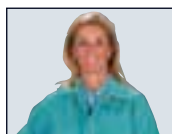
Kevlar® twill 8 oz	Nylon cane mesh
Kevlar® mesh 10 oz	Tubular knit Kevlar®

FABRIC BY INDUSTRY



Aluminized Clothing

Pages 2-5



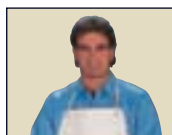
Flame Resistant Work Wear

Pages 6-21



Arc Flash Clothing

Pages 12-14 & 46-47



Aprons

Pages 22-25



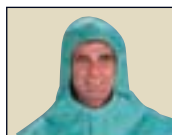
Leggings, Chaps, Spats

Pages 26-29



Sleeves and Arm Guards

Pages 30-31



Hoods, Head Protection

Pages 32-34



Heat Resistant Gloves

Pages 35-37



Welding Gloves

Pages 38-39



Hand Protection

Pages 40-43



Mechanics Gloves

Page 44



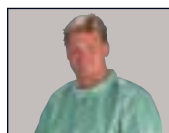
Face Shields

Page 47



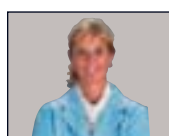
Foot Guards

Pages 48-49



Chemical Protection

Page 50



Lab, Office, and Shop Coats

Page 51



Welding Screens & Blankets

Pages 52-53



High Visibility Products

Page 54



Fabric Data

Pages 55-56



Aluminized Clothing

Approach Suit

Approach to within a few yards of flames and radiant heat up to 2000°F.

Jumpsuits and coats may also be adapted to be worn with breathing apparatus.

0647-(Fabric)	Hood	671-(Fabric)	Overshoes
600-(Fabric)	Jacket 30"	234-(Fabric)	Gloves
606-(Fabric)	Pants		

Aluminized clothing has a wide range of applications in the industrial setting, especially where such hazards as high heat or molten metal exist. Along with the ability to reflect 95% of radiant heat, aluminized fabrics reduce the flow of ambient heat by 50% versus non aluminized fabric. Aluminized clothing helps shed both ferrous and non ferrous molten metals.

A WORD OF CAUTION: DO NOT CONFUSE AMBIENT, CONDUCTIVE AND RADIANT HEAT!

The following definitions are given as a reference as well as vital assistance in selecting the proper clothing for heat protection:

Ambient Heat is the surrounding atmospheric temperature in a given situation. Examples: 65°-70°F in an office; 2000°F in a fire walk.

Conductive Heat is generated by direct contact with a hot surface. Examples: picking up a burner block at 600°F; leaning against a furnace wall at 1000°F.

Radiant Heat is generated by the sun or a source of fire, such as a fireplace or furnace, and is absorbed by masses of material struck by the heat's rays. (This is why it is cooler in the shade on a hot day.)



Garment Styles

Jacket-30"

Coat-40"

Coat-45"



600-(Fabric)



601-(Fabric)



602-(Fabric)

Aluminized Clothing

	30" JACKET	40" COAT	45" COAT	50" COAT	PANT	COVERALL	40" OPEN BACK COAT	HOOD	39" APRON
19 oz KEVLAR® BLEND	600-AKV	601-AKV	602-AKV	603-AKV	606-AKV	605-AKV	564-AKV-40	0647-AKV	539-AKV
19 oz RAYON	600-ARH	601-ARH	602-ARH	603-ARH	606-ARH	605-ARH	564-ARH-40	0647-ARH	539-ARH
15 oz RAYON	600-AR	601-AR	602-AR	603-AR	606-AR	605-AR	564-AR-40	0647-AR	539-AR
17 oz CARBON KEVLAR®	600-ACK	601-ACK	602-ACK	603-ACK	606-ACK	605-ACK	564-ACK-40	0647-ACK	539-ACK
10 oz CARBONX®	600-ACX10	601-ACX10	602-ACX10	603-ACX10	606-ACX10	605-ACX10	564-ACX10-40	0647-ACX10	539-ACX10
16 oz FIBERGLASS	600-AG	601-AG	602-AG	603-AG	606-AG	605-AG	564-AG-40	0647-AG	539-AG
11 oz KEVLAR® TWILL	600-AKT	601-AKT	602-AKT	603-AKT	606-AKT	605-AKT	564-AKT-40	0647-AKT	539-AKT
7 oz PBI®	600-APBI	601-APBI	602-APBI	603-APBI	606-APBI	605-APBI	564-APBI-40	0647-APBI	539-APBI
8.5 oz NOMEX®	600-AN	601-AN	602-AN	603-AN	606-AN	605-AN	564-AN-40	0647-AN	539-AN

Primary Protective Clothing Data

Protective clothing designed to be worn for work activities during which significant exposure to molten substance splash, radiant heat, and flame is likely to occur.

Such work activities include charging, taping, and pouring, during which work is carried out in close proximity to molten substances and hot surfaces and contact with either is likely.

Secondary Protective Clothing Data

Protective clothing designed for continuous wear for work activities in designated locations in which intermittent exposure to molten substance splash, radiant heat, and flame sources is possible.

Secondary protective clothing is designed so that it will not continue to burn after exposure to and removal of a source of ignition. Protection against metal splash and radiant heat are secondary in intent.

Garment Styles

Coat-50"

Aluminized Pants

Aluminized Coverall

40" Open Back Coat

Combo Coat



603-(Fabric)



606-(Fabric)



605-(Fabric)



564-(Fabric)-40
30", 45" and 50" available



600-Combo-(Fabric)



Entry Suits

Fire Entry Suit #FE2000-XB

The ultimate insulated suit constructed of ZETEX PLUS® high temperature fabric for maximum protection in total flame entry.

HOOD: Designed to be used with air mask. Inner drape flame seals. Underarm adjustment straps. Built-in shell for structural support. Hard cap with ratchet headgear. Speedy clip for hard cap support. Hardened aluminum window frame with two tempered glass lenses, plus two gold plated lenses for thermal protection.

COAT: Designed to be worn with a breathing apparatus. Double storm fly front. Flame seal with drawstring at coat bottom.

PANTS: High waist design. 2-inch wide adjustable suspenders. Adjustment straps on leg bottoms.

BOOTS: Designed to fit over work shoes. Rear entry with overlap snap closure and adjustable take-up straps. Insulated wire reinforced sole of flame resistant neoprene fiberglass riveted to boot cover. All straps and bindings are ZETEX PLUS®.

MITTS: Heavyweight all ZETEX PLUS® construction.

WEIGHT: 48 lbs (22 kg)

Kiln Suit #KL850-XB

Highly insulated suit with aluminized ZETEX® fabric outer shell and internal vapor barrier.

HOOD: Designed like the fire entry hood. Hardened aluminum window frame with tempered glass lenses.

COAT: Designed to be worn with a breathing apparatus. Double storm fly front. Flame seal with drawstring at coat bottom.

PANTS: High waist design. 2-inch wide adjustable suspenders. Adjustable straps on leg bottoms. ZETEX PLUS® reinforced knee pads.

BOOTS: Designed to fit over work shoes. Heavy insulated upper boot cover with zipper and storm fly. Adjustable tightening straps. 1-inch wooden sole with anti-skid bottoms. Inside leather toe and ankle adjustable straps. ZETEX PLUS® binding.

MITTS: ZETEX PLUS® palm and thumb. Aluminized back and cuff.

Proximity Suit #PR750-(XB)

Insulated suit with aluminized ZETEX® fabric outer shell and double vapor barrier.

HOOD: Full shoulder length drape. Adjustable underarm straps. Built-in shell for structural support. Hard cap with ratchet adjustment. Speedy clip for hard cap support. 6" x 9 1/4" gold window and aluminum retainer. Two side wing locks for holding lens and retainer in place.

COAT: Available with or without breathing apparatus accommodation. Double storm fly front. Flame seal with drawstring at coat bottom.

PANTS: High waist design. 2-inch wide adjustable suspenders. Adjustment straps on leg bottoms.

BOOTS: Designed to fit over work shoes. Leather insulated soles. Adjustment tightening straps. ZETEX PLUS® binding.

MITTS: ZETEX PLUS® palm and thumb. Aluminized back and cuff.

Approach Suit #AP550-(XB)

Vapor barrier lining of flame retardant neoprene coated FR poly-cotton.

HOOD: Designed like proximity hood with built-in shell for structural support. Hard cap with ratchet adjustment. Speedy clip for hard cap support. Full-length drape is not insulated.

COAT: Tailored sleeves with snap adjustment. Covered front snaps. Available with or without breathing apparatus accommodation.

PANTS: High waist design. 8-point all elastic adjustable suspenders (firefighter's type). Snapped triangular storm fly front. Snap adjustment on leg bottoms.

BOOTS: Designed to fit over work shoes. Leather soles and heels. Adjustment tightening straps.

GLOVES: Gauntlet style with leather palms. S.E.F. lining in fingers.

Fire Entry Suit

Kiln Suit



APPLICATIONS

Our suits are used in industries where protection from high heat sources, including steam and hot liquids or vapors, is required. Examples would be refineries, petrochemical plants, foundries and casting plants, basic steel and aluminum industries, glass and ceramic plants, and laboratories.

Our FIRE ENTRY suit is an essential safety measure for industries dealing with volatile or highly flammable materials. The KILN and PROXIMITY suits are used for maintenance tasks in high heat areas such as kiln or oven maintenance and repair. The Proximity suit, with its double vapor barrier, should be used when steam and volatile materials present an additional hazard. The Kiln suit is suitable for short duration in ambient heat up to 1000°F (530°C) and the Proximity suit in ambient heat up to 500°F (260°C).

Proximity Suits/Cooling Vests

Proximity Suit

Approach Suit, Lined



The non-insulated APPROACH suit is used in just about every industry requiring heat protective clothing. It is suitable where ambient temperatures do not exceed 200°F (93°C).

All suits with aluminized ZETEX® outer shell fabric are suitable for exposure to radiant heat up to 2000°F (1093°C).

Breathing apparatus is required for the Kiln and Entry suits, and is optional for the Proximity and Approach suits. We do, however, recommend that Proximity suits be ordered with breathing apparatus accommodation.

ALWAYS have two people suited with Fire Entry, Kiln and Proximity suits to work in relays and to aid each other.

Gel Pack Cooling Vest



FR-7A® Cooling Vest #CV-VEST

One size fits all. Requires 6 each polyethylene gel packs per vest. Three each in front and 3 each in back. Packs are frozen and then placed in the foil insulated pockets to keep wearer cool in hot environments.

Gel Packs #GCS

Vortex Cooling Vest



Vortex Cooling Vest #HCBV-VEST

Vortex head and body cooling system uses 70-100 psi (4.8-6.9 bar) compressed air to cool a worker up to 60°F differential from the air inlet temperature. Vest makes most efficient use of cooling power by properly distributing tempered air over the body.



Flame Resistant Cotton Workwear

PROBAN®/FR-7A®

Proban® / FR-7A® 100% cotton fabrics by Westex are guaranteed to retain their flame resistance to 25 industrial or 50 home launderings. FR-7A® fabrics are offered as an economical alternative for garments not expected to wear beyond the certification point.

Weight: 9 - 9½oz sateen, 11oz twill.

Most popular colors: Visual green, navy, yellow, orange, and red.

	30" COAT	40" COAT	45" COAT
9 oz GREEN	600-GR	601-GR	602-GR
9 oz NAVY	600-NS	601-NS	602-NS
9 oz ORANGE	600-OS	601-OS	602-OS
9 oz RED	600-RS	601-RS	602-RS
11 oz GREEN	600-GW	601-GW	602-GW
11 oz NAVY	600-NW	601-NW	602-NW
11 oz ORANGE	600-OW	601-OW	602-OW
11 oz RUSSET	600-RRT	601-RRT	602-RRT
7 oz GREEN	600-GR7	601-GR7	602-GR7

Garment Styles

30" Jacket & Pant

40" Coat

45" Coat

50" Coat



600-(Fabric) and 606-(Fabric)

601-(Fabric)

602-(Fabric)

603-(Fabric)

Flame Resistant Cotton Workwear

	50" COAT	COVERALL	PANT	SHIRT	CAPE SLEEVE	19" BIB	BIB OVERALL
9 oz GREEN	603-GR	605-GR	606-GR	625-GR	577-GR	BIB-GR-19	618-GR
9 oz NAVY	603-NS	605-NS	606-NS	N/A	577-NS	BIB-NS-19	618-NS
9 oz ORANGE	603-OS	605-OS	606-OS	N/A	577-OS	BIB-OS-19	618-OS
9 oz RED	603-RS	605-RS	606-RS	N/A	577-RS	BIB-RS-19	618-RS
11 oz GREEN	603-GW	605-GW	606-GW	N/A	577-GW	BIB-GW-19	618-GW
11 oz NAVY	603-NW	605-NW	606-NW	N/A	577-NW	BIB-NW-19	618-NW
11 oz ORANGE	603-OW	605-OW	606-OW	N/A	577-OW	BIB-OW-19	618-OW
11 oz RUSSET	603-RRT	605-RRT	606-RRT	N/A	577-RRT	BIB-RRT-19	618-RRT
7 oz GREEN	603-GR7	N/A	N/A	625-GR7	N/A	N/A	N/A

Garment Styles

Coverall	Cape Sleeve	Bib Overall	Shirt & Pant
 <p>605-(Fabric)</p>	 <p>577-(Fabric) Bib-19-(Fabric)</p>	 <p>618-(Fabric)</p>	 <p>625-(Fabric) and 606-(Fabric)</p>



Indura® Ultra Soft®

Indura® 100% cotton and Indura® Ultra Soft® 88% cotton 12% Nylon flame resistant fabrics are guaranteed flame resistant for the life of the garment.

For over 10 years, millions of garments made from Indura® fabrics have provided workers with the cool comfort of cotton for secondary protective clothing against flash fire, electric arc, and metal splash. Indura® fabrics are available in several weights including 7oz, 9oz and 12oz. Our Indura® products come in a variety of colors.



CALL FOR BROCHURE



Brown Duck Quilt Lined Coat

11 oz Indura® Ultra Soft® shell with 10.5 oz Moda Quilt Lining. 47 ATPV.

**Part # 600-BDMQ-(size)
Category 4**



Brown Duck Quilted Bib Overall

11 oz Indura® Ultra Soft® shell with 10.5 oz Moda Quilt Lining. 47 ATPV.

**Part # 618-USBDK-(size)
Category 4**



Navy or Khaki Coverall

9oz Navy Indura® Ultra Soft®, 12 ATPV

Part # 605-USN-(size)

7oz Khaki Indura® Ultra Soft®, 8.2 ATPV

Part # 605-USK-(size)

9oz Navy Indura®,
Part # 605-IND-N-(size)



Medium Blue Work Shirt

7 oz Medium Blue Indura® Ultra Soft®,
8.2 ATPV

Part # 625-USB-(size)



Khaki Work Shirt

7 oz Khaki Indura® Ultra Soft®,
8.2 ATPV

Part # 625-USK-(size)



Navy Work Pant

9 oz Navy Indura® Ultra Soft®,
12 ATPV

Part # 606-USN-(waist x inseam)



Indura® Ultra Soft® Interlock Short Sleeve Shirt

Sizes: S-5XL Colors: Navy, Orange, Gray.
10.9 ATPV

Part # 610-USI-SS-(color)-(size)
Category 2



Indura® Ultra Soft® Interlock Long Sleeve Shirt

Sizes: S-5XL Colors: Navy, Orange, Gray.
10.9 ATPV

Part # 610-USI-LS-(color)-(size)
Category 2



Denim Rugged Twill Work Pant

12-13 oz Denim Indura® Ultra Soft®,
10 ATPV

Part # 606-USD-(waist x inseam)



Indura® Ultra Soft® Fleece Full Zip Hooded Sweatshirt

Indura® Ultra Soft® Fleece. Sewn with
Nomex® Thread. Navy, 21.8 EBT

Part # 615-USFN-(size). Category 2



Indura® Ultra Soft® Fleece Hooded Sweatshirt

Indura® Ultra Soft® Fleece. Sewn with
Nomex® Thread. Navy, 21.8 EBT

Part # 617-USFN-(size). Category 2



Indura® Ultra Soft® Fleece Crewneck Sweatshirt

Indura® Ultra Soft® Fleece. Sewn with
Nomex® Thread. Navy, 21.8 EBT

Part # 620-USFN-(size). Category 2



Insulated Parka & Bib

Royal part	# 600-CC-USRB-(size)	Red part	# 600-CC-USR-(size)
Royal part	# 618-CC-USRB-(size)	Red part	# 618-CC-USR-(size)



Extrication Coverall features

- 9 oz Indura® Ultra Soft®
- 2" reflective triple trim
- Semi-bellowed cargo pockets
- Knee and elbow pads
- Zipper front with Velcro® storm flap
- Zipper leg slits
- Adjustable velcro® wrist and ankle straps
- Inset knited wristlets

Extrication Coverall part numbers

Khaki part#	605-XK-(size)
Navy part#	605-XN-(size)
Red part#	605-XR-(size)
Royal Blue part#	605-XRB-(size)



Indura® Ultra Soft®

Insulated Coverall

Royal part # 605-CC-USRB-(size)
regular
Red part # 605-CC-USR-(size)
talls

Sizes available

S-4XL in

LT-4XLT in

Our Indura® Ultra Soft® Deluxe cold climate
FR work wear with wind barrier has proven
warmth and flame resistance.



Durable FR Winter liners

9 oz woven Indura® Ultra Soft®
fleece lined.

Cape style (pictured) # EL-29D
Short no cape style # EL-27D



Knited Indura® Ultra Soft®

Unlined, napped side to skin.

Cape style (pictured) # WL-29D





Arc Flash Kits

12 CAL HOODED JACKET KIT

1Ply 9 oz. Indura® Ultra Soft®

35" Hooded Jacket	SW-620-12-(size)
Face Shield	WV-ARC-XL-CN
Chin Cup	SW-CN-G
Cap Bracket	HB-2-CAP
Class 0 Rubber Glove	LRIG-0-11-(size)
Leather Protector	PG-0-ADJS-(size)
Glove Bag	GB-12
Gear Bag	909-ARC
COMPLETE KIT	L2K-12-620-(Clothing size)- (Glove size)

Meets NFPA 70E/ASTM F 1506
Hazard/Risk Category 2



Hard cap not included.

12 CAL JACKET AND BIB OVERALL KIT

1Ply 9 oz. Indura® Ultra Soft®

35" Jacket	SWJ-12-(size)
Bib Overall	SWB-12-(size)
Face Shield	WV-ARC-XL-CN
Chin Cup	SW-CN-G
Cap Bracket	HB-2-CAP
Class 0 Rubber Glove	LRIG-0-11-(size)
Leather Protector	PG-0-ADJS-(size)
Glove Bag	GB-12
Gear Bag	909-ARC
COMPLETE KIT	L2K-12-(Clothing size)- (Glove size)

Meets NFPA 70E/ASTM F 1506
Hazard/Risk Category 2



Hard cap not included.

20 CAL JACKET & BIB OVERALL KIT

1Ply 12 oz. Indura® Ultra Soft®

35" Jacket	SWJ-20-(size)
Bib Overall	SWB-20-(size)
Hood	SWH-20
Class 0 Rubber Glove	LRIG-0-11-(size)
Leather Protector	PG-0-ADJS-(size)
Glove Bag	GB-12
Gear Bag	909-ARC
COMPLETE KIT	L2K-20-(Clothing size)- (Glove size)

Meets NFPA 70E/ASTM F 1506
Hazard/Risk Category 2



Hard cap not included.

Arc Flash Kits



Hard cap not included.

36 CAL JACKET & BIB OVERALL KIT

9 oz. over 7 oz. Indura® Ultra Soft®

35" Jacket	SWJ-36-(size)
Bib Overall	SWB-36-(size)
Hood	SWH-36
Class 2 Rubber Glove	LRIG-2-14-(size)
Leather Protector	LLPG-12-(size)
Glove Bag	GB-15
Gear Bag	909-ARC
COMPLETE KIT	L3K-36-(Clothing size)- (Glove size)

Meets NFPA 70E/ASTM F 1506
Hazard/Risk Category 3

40 CAL JACKET AND BIB OVERALL KIT

9 oz. Indura® Ultra Soft® over Modaquilt

35" Jacket	SWJ-40-(size)
Bib Overall	SWB-40-(size)
Hood	SWH-40
Class 2 Rubber Glove	LRIG-2-14-(size)
Leather Protector	LLPG-12-(size)
Glove Bag	GB-15
Gear Bag	909-ARC
COMPLETE KIT	L4K-40-(Clothing size)- (Glove size)

Meets NFPA 70E/ASTM F 1506
Hazard/Risk Category 4



Hard cap not included.

51 CAL JACKET AND BIB OVERALL KIT

12 oz. over 7 oz. Indura® Ultra Soft®

35" Jacket	SWJ-51-(size)
Bib Overall	SWB-51-(size)
Hood	SWH-51
Class 2 Rubber Glove	LRIG-2-14-(size)
Leather Protector	LLPG-12-(size)
Glove Bag	GB-15
Gear Bag	909-ARC
COMPLETE KIT	L4K-51-(Clothing size)- (Glove size)

Meets NFPA 70E/ASTM F 1506
Hazard/Risk Category 4



Hard cap not included.



Master Series 70E Protection

The Master Series Arc Flash clothing line is our most advanced design and fabric combination for NFPA 70E HRC 4 protection. The Master Series is available in a 44 cal/cm² and 74 cal/cm². Our 44 cal product is the lightest weight HRC4 ensemble on the market today. Featured is the new unique designed hood, the HRC "2-to-4 Quick Change". Please call and ask us for more information.

- Light weight and durable
- Elastic adjustable pulls at waist of jacket and pant
- Unique "2-to-4 Quick Change" hood
- Leg gussets for easy on and off

**Lightest Weight
Category 4
In the Industry**



Category 4 44 Cal/cm²

Jacket	SWJ-MS44-(size)
Over Pant	SWP-MS44-(size)
Over Hood	SWH-MS44
10 Cal base shield	SW-WVCK

Category 4 74 Cal/cm²

Jacket	SWJ-MS74-(size)
Over Pant	SWP-MS74-(size)
Over Hood	SWH-MS74
10 Cal base shield	SW-WVCK

Glass Handler's Kevlar® Clothing

Wrist Guard

36-KTW-9

Double layer of 8 oz. Kevlar® twill protects wrist from cuts and lacerations. Thumb hole keeps wrist protector in place. Velcro® closure.



- 36-KTW-9 9" sleeve
- 36-KTW-11 11" sleeve
- 36-KTW-18 18" sleeve

Cape Sleeve 577-KM-KTW

Glacier Wear™ cape sleeve helps keep you cool while providing the cut resistance of 100% Kevlar®.



577-KM-KTW

646-KTW



Glacier Wear™

Glacier Wear™ safety clothing provides a unique combination of cut resistance and comfort. So unique, it's patented. Strategically positioned Kevlar® mesh fabric provides a cool venting effect and cut resistance. No metal on the product eliminates scratching. Custom designed to your specification or use our popular standard designs. Glacier Wear™ is available as a jacket, cape sleeve, surgical style coat, bib apron, or sleeve. Glacier Wear™ is an economical alternative to eyelet-studded products.

Split Leg Apron and Ball Cap

550-KTW-40-SP

100% Kevlar® twill split leg apron with replaceable belly patch. Adjustable Velcro® leg and webbing neck and waist straps provides a "one size fits most" apron. Available in 40", 48", 52" and 56" lengths.

646-KTW

100% Kevlar® twill baseball cap available with or without back "legionnaire style" flap.

Eyelet Ventilated Cap Sleeve

- EV-1529-KTW 1-ply Kevlar® twill
- EV-1529-WJC 2-ply white jean cloth NOT-FR
- EV-1529-GR 2-ply green sateen cotton
Lengths available: 21", 23", 25", 27", 29", 31", 33" and 35".





Nomex® Clothing

Nomex® IIIA from DuPont is an inherently flame resistant fabric. This aramid and static dissipative fiber blend helps shield the wearer from flames, flash fires and electric arcs. Nomex® IIIA clothing is extremely durable, light weight and inherently flame resistant. We offer Nomex® IIIA garments in 3 weights; 4.5oz, 6oz, and 9.5oz. Nomex® IIIA is available in a variety of colors.

Coats available in 30", 40", 45" and 50" lengths.

Garment Styles

Coveralls



605-(Fabric)

Nomex® IIIA Coveralls

Standard coverall features six pockets: 2 breast, 2 rear, 2 front; covered snap front and elasticized waistband.

605-NMX-4.5 oz.-Orange (shown)

605-NMX-6 oz.-Royal Blue (shown)

Additional colors and weights available.

605-XK-NMX-6 oz.-Khaki (shown)

605-IFRB-NMX-6 oz.-Royal Blue (shown)

Nomex® Clothing

Nomex® Product Numbers

	30" JACKET	50" COAT	COVERALL	PANT	SHIRT
4.5 oz NAVY	600-NMX-4.5-N	603-NMX-4.5-N	605-NMX-4.5-N	N/A	625-NMX-4.5-N
4.5 oz ORANGE	600-NMX-4.5-O	603-NMX-4.5-O	605-NMX-4.5-O	N/A	625-NMX-4.5-O
6 oz NAVY	600-NMX-6-N	603-NMX-6-N	605-NMX-6-N	606-NMX-6-N	625-NMX-6-N
6 oz ROYAL BLUE	600-NMX-6-RB	603-NMX-6-RB	605-NMX-6-RB	606-NMX-6-RB	625-NMX-6-RB
9.5 oz GREEN	600-NMX-9.5	603-NMX-9.5	605-NMX-9.5	606-NMX-9.5	N/A

Knit Nomex® Undergarments



Hot Not™

Heat resistant glove and sleeve of Nomex® III for constant handling of materials up to 500°F, intermittently up to 700°F. For hot solid surfaces, not for heavy welding or molten materials.

HNG Glove
HNS Sleeve



Knit Hoods

Knit Nomex® and Nomex®-blend hoods.



KN-52 Short style, 1-ply, 6 oz. (shown)

KN-50 Short style, 2-ply, 6 oz.



2001 NFPA firefighter's hood. Knit PBI outer, knit wool inner. Cold weather protection.



PBI-51 PBI fabric, (shown)

FL-KN-51 Long style, 2-ply top, 1-ply bib, 6 oz. Not NFPA approved.



KN-51-NFPA 2-ply knit hood. Meets 1997 NFPA specs.





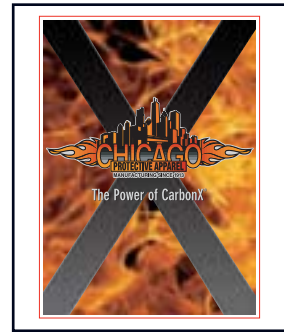
CarbonX® Workwear



CarbonX® fabrics provide superior flame resistance in an inherently flame resistant fabric.

Our line of work wear is available in an 11oz. black woven or a 10oz. deep navy abrasion resistant twill. This revolutionary new fabric has the following properties:

- Higher Limited Oxygen Index (LOI)
- UV Resistance
- Non-shrinking
- Non-melting
- Odor absorbing



CALL FOR BROCHURE

Garment Styles

Bib Overall

Coverall

30" Jacket/Pant



618-(Fabric)

605-(Fabric)

600-(Fabric) and 606-(Fabric)

CarbonX® Workwear

	30" JACKET	45" COAT	50" COAT	PANT	COVERALL	BIB OVERALL
11 oz BLACK	600-CX11	602-CX11	603-CX11	606-CX11	605-CX11	618-CX11
10 oz NAVY	600-CX10	602-CX10	603-CX10	606-CX10	605-CX10	618-CX10



Undergarment Styles

Short Top/Short Pant

Long Top/Long Pant

Undergarments

Undergarments are made of a single layer of 7.7 oz interlock knit. The fabric has a TPP rating of 14.7 and an ATPV of 12.3 cal/cm². Tops and bottoms are available in sizes S-4XL. Socks are one size only.

Long sleeve top **CX-54-(size)**

Short sleeve top **CX-64-(size)**

Long pant **CX-55-(size)**

Short Pant **CX-65-(size)**

Socks **CX-56-22**

16" Sleeves **CX-16**

18" Sleeves **CX-18-TH**





Flame Retardant Clothing



VINEX

Vinex® • FR9B

Vinex® flame and aluminum splash resistant fabrics by Westex are a blend of 85% vinyl and 15% polynosic rayon.

Vinex® fabrics are inherently flame resistant and have been used extensively and continuously since 1985 for protective clothing for workers exposed to molten aluminum in major aluminum producing facilities throughout the world. Vinex® shows a unique ability to shed molten aluminum.

Weights/Color:

6 oz., Medium blue shirt weight
8½ oz., Navy pant, jacket, and shirt weight.

Oasis™

A molten metal splash resistant fabric from Southern Mills combines comfort and protection in a fabric that is inherently flame resistant.

Oasis is made from a blend of fibers including Lenzing FR for enhanced comfort and Nylon for added durability. Oasis™ is available in three weights:

7.5 oz, 10 oz, and 12 oz.

Vinex® Product Numbers

	30" JACKET	45" COAT	50" COAT	COVERALL	PANT	SHIRT
6 oz MEDIUM BLUE	N/A	N/A	N/A	N/A	N/A	625-FR9B-MB
8.5 oz NAVY	600-FR9B	602-FR9B	603-FR9B	605-FR9B	606-FR9B	625-FR9B-N

Oasis™ Product Numbers

	30" JACKET	45" COAT	50" COAT	COVERALL	PANT	SHIRT
7.5 oz COOL BLUE	N/A	N/A	N/A	N/A	N/A	625-ON7
10 oz NAVY	600-ON	602-ON	603-ON	605-ON	606-ON	625-ON
12 oz NAVY	600-ON12	602-ON12	603-ON12	605-ON12	606-ON12	625-ON12

Leather Welder's Clothing



Our leather welder's clothing is made from garment quality side split leather. Its soft and pliable feel keeps it a favorite choice for welders to protect against heat, sparks and splatter. Jackets and cape sleeves are available in sizes S-5XL.

	30" JACKET	CAPE SLEEVE	19" BIB	COVERALL	PANT	CHAP	48" SPLIT LEG APRON
RUST SPLIT LEATHER	600-CL	577-CL	BIB-CL-19	605-CL	606-CL	555-CL	550-CL-48

Garment Styles

30" Jacket

Cape Sleeve & Bib

Chaps

Split Leg Apron



600-CL



577-CL
BIB-CL-19



555-CL



550-CL-48

Safety aprons are available in all fabrics with your choice of length and closure. Standard apron closure is snap or eyelet. Please specify any other option desired. (See pages 55-56 for complete fabric list.)

How to Order Aprons

Length **536** – Fabric **GR**

Apron Lengths

530	30"
536	36"
539	39"
542	42"
548	48"
W24	18" waist

Apron Fabric

AKV	Aluminized Kevlar® blend
ARH	Aluminized rayon heavy
CL	Chrome leather gray or rust
BD	Blue denim, non-FR
FRD	Fire resistant duck, non-durable
GR	Green FR-7A cotton
GW	Green FR-7A twill
HY	Hycar
KTW	Kevlar® twill
KV	22 oz. aramid-glass blend
NMX-9.5	9.5 oz. Nomex® III A
NS	FR-7A navy cotton

(Additional fabrics available.)



Closures



1. Snap Buckle and Webbing
2. Eyelets and Leather Ties
3. Eyelets and Cotton Ties
4. Eyelets and Nylon Ties
5. Snap Hook and D-Ring
6. Velcro® Tabs and Velcro® Straps
7. Nexus Clip

Waist Aprons

- W24** Standard size 24" x 18"
- 560** 30" x 18" with 20" x 14" steel-stapled patch
- 561** Machinist apron—24" x 18". Has quick-release fasteners for safety when working near rotating parts.
- 563** 24" x 24" waist apron
- 830** 24" x 18" with 10" x 14" plain patch
- 832** 24" x 18" with 10" x 14" steel-stapled patch
- 835** 24" x 18" entirely steel-stapled—no patch



W24



832

Chrome Leather Reinforced Aprons

42" Apron



Chrome leather bib apron with belly patch reinforced with steel staples, or plain as shown.

Steel-Stapled (10" x 14") Belly Patch

- 825** 24" x 30"
- 826** 24" x 36"
- 827** 24" x 42"
- 828** 24" x 48"

Plain Leather (10" x 14") Belly Patch

- 820** 24" x 30"
- 821** 24" x 36"
- 822** 24" x 42"
- 823** 24" x 48"



Split Leg Apron (waist type)

P-829 Plain (as shown)
24" x 24". Two straps at leg. Adjustable web belt at waist.

S-829 Steel-Stapled
24" x 24". Same as above with full steel stapled reinforcement throughout for further abrasion resistance.





Kick-Back Apron

Protects lower abdomen, stomach, groin and chest from kick-back and similar hazards.

(See photographs for individual apron coverage.) Constructed of heavy wool and Kevlar® sewn between 2 layers of chrome leather. Fastens with an adjustable web belt. Aprons are not puncture proof, and should not be tested on wearer.

KBA-bib type 16" x 28" KBA-standard 24" x 18" KBA-tapered 16" x 13" KBA-tapered 21" x 17"

Garment Styles



KBA-High Waist

19" long x 28" wide duck. 8" x 14" fiber "arch" withstands heavy blows. Heavy felt quilted between two layers of duck, above and below fiber. Adjustable web fasteners at bib and waist. Excellent protection against lumber kick-back from rip saws.



Carpenter's Apron

Bib type 19" x 26" or waist type 18" x 9" standard with 2 pockets. 10 oz. fire resistant duck (FRD) or non-fire resistant denim (BD). Custom pocket design available.



189-BD



189-FRD



2426-FRD

Denim Aprons

Denim Shop Apron

532-2P (Most popular)

General purpose blue denim apron. Not flame retardant. 28" x 36" two-pocket style, one bib and one waist. Hemmed on all sides and has sewn on ties.



No Pocket

#532-NP 28"W x 36"H
Old #NP-532-BD No pockets.
Sewn denim neck tie &
sewn nylon waist ties.



ONE Pocket

#532-1PE 28"W x 36"H
1 waist pocket.
Sewn denim neck
& waist ties.



ONE Pocket

#532-1P 28"W x 36"H
1 waist pocket,
Sewn denim neck tie &
sewn nylon waist ties.



TWO Pocket

#532-2PE 28"W x 36"H
1 bib and 1 waist pocket.
Sewn denim neck
& waist ties.



TWO Pocket

#532-2P 28"W x 36"H
Old #532-BD 1 bib & 1 waist
pocket. Sewn denim neck tie
& sewn nylon waist ties.



THREE Pocket

#532-3PE 28"W x 36"H
3 pockets.
Sewn denim neck
& waist ties.



Split Leg Aprons and Hip Leggings

Our split leg aprons, chaps and hip leggings are available in a variety of styles, lengths and fabrics. see page 27 for many of our most popular styles. Please specify or call us if you require unique closures or features.



550-FRD-48-EL
Additional lengths available

No need to go to Holland for wood shoes.

"Hot Foot" Wood Sole That Bends!



#CPA-351-(size)

Men's sizes:

S (7-8)

M (9-10)

L (11-12)

XL (13-14)

XXL (15-16)

MADE IN USA

- Made of 1 1/8 inch thick seasoned wood
- Two strong sole leather hinges
- Straps on quickly over any shoe
- Heat-resistant and puncture-resistant

Attached Hip Leggings



HL-777-(Fabric)

Attached hip legging with adjustable belt top. 36" outseam. Please specify if snap or Velcro® closure is needed at back of leg.

Hip Leggings



470-(Fabric)

Slip-on hip leggings are interchangeable for either leg. 36" outseam. Standard with flare. Adjustable snap strap loops at top accommodates your belt. Specify for eyelet option (shown).

	SPLIT LEG APRON 48"	ATTACHED HIP LEGGINGS	HIP LEGGINGS	COWBOY STYLE CHAP	CHAP PANTS	"STEP-IN" CHAP
19 oz ALUMINIZED KEVLAR®	550-AKV-48-SW	HL777-AKV	470-AKV	555-AKV	CP777-AKV	778-AKV
19 oz ALUMINIZED RAYON	550-ARH-48-SW	HL777-ARH	470-ARH	555-ARH	CP777-ARH	778-ARH
CHROME LEATHER	550-CL-48-SW	HL777-CL	470-CL	555-CL	CP777-CL	778-CL
14.9 oz FIRE RESISTANT DUCK	550-FRD14.9-48-SW	HL777-FRD14.9	470-FRD14.9	555-FRD14.9	CP777-FRD14.9	778-FRD14.9
9 oz GREEN FR COTTON	550-GR-48-SW	HL777-GR	470-GR	555-GR	CP777-GR	778-GR
8 oz KEVLAR® TWILL	550-KTW-48-SW	HL777-KTW	470-KTW	555-KTW	CP777-KTW	778-KTW
9 oz NAVY FR COTTON	550-NS-48-SW	HL777-NS	470-NS	555-NS	CP777-NS	778-NS

Garment Styles

Cowboy Style Chap

Chap Pants

"Step-In" Chap



555-(Fabric)

Adjustable belt top. Rear leg straps. 39" outseam. Open back.



CP-777-(Fabric)

Adjustable belt top. 32" inseam. No flare.



778-(Fabric)

Step-in cuffs, adjustable rear leg straps, adjustable belt top, 39" outseam.



Leggings and Overshoes

Standard Spring Leggings

300

Spring frame permits instant adjustment and removal. Wide rear flap provides full protection to the back of the leg.

14" height, 6" flare



300-CL



300-KV

Side Bar Leggings

1310

Unique combination of adjustable snap top and vertical metal side bar allows quick release at bottom of legging. Two fiber shin shields inside front of legging protect against minor blows. **14" height, 5½" flare**



1310-CL



1310-FRD

Replaceable Cover Leggings

333-CL

Deluxe style with removable cover for economical replacement cost. Snap out steel spring frame assures full time comfortable fit. Metal instep bar forms and holds flare to shoe. (Thick rubber flare standard with leather legging, as shown.)

14" height, 7" flare



401

Full Velcro® closure. Fast removal, lightweight protection. Metal instep bar standard. **14" height, 8½" flare**



401-AKV



401-CL

Overshoe

671-AKV

Overshoes are designed to be worn over workshoes. Sole is ¼" thick, skid resistant, treated neoprene belting. Two adjustable leather straps close front of overshoe.

Standard height: 12"
Also available in 8"
and 16" heights



One size fits most.

All leggings and spats available in your choice of fabric.

Spats/Knee pads/Pants Guards

Elastic Top Spat

E485

Elastic top spat. Rear snap closure. Adjustable instep strap. **7" height, 6" flare**



Safety Spat

485

Standard safety spat. Rear Velcro® closure. Easily adjusted or removed. **7" height, 6" flare**



Closed Toe Style Spat

E485-CL-8

Closed toe style spat. Elastic top. Rear snap closure. Flare cups toe of shoe. **7" height, Closed toe flare**



Legging-Spat

400

Legging-spat. Two-position side snap closures. Snap-on elastic instep strap. **9" height, 8½" flare**



Short Side Bar Leggings

375

Short side bar leggings. Snap top and vertical metal side bar. Two fiber shin shields inside front of legging. Adjustable instep strap. **9" height, 5½" flare**



Pant Leg Cuff Guards

PLCG-1-S

PLCG-2-S

PLCG-1-V

PLCG-2-V

Elastic construction with your choice of Velcro® or snap button fasteners. Available in widths of 1" or 2".



Knee Pads

390-CL

Heavyweight leather knee pad. Wool felt lined for cushion. Adjustable leather strap. **10" length**



EC-390-CL

Economy style foam lined leather knee pad. Elastic snap strap. **Approx. 5" x 5"**



395-CL

Wool felt lined leather knee pad with three adjustable straps. **17" length**



394

Contoured rubber knee pad. Two adjustable straps.



KP

High-impact two-piece plastic outer shell jointed at the knee for full range of motion. Half shock-reducing inner pad and unique grip strip. Quick release straps. Replacement parts available.



Cushioned knee pads (not shown) can be sewn into knee areas on pants.



Sleeves

Safety sleeves are available in all fabrics with your choice of length and closure. Standard sleeve closure is snap at wrist and open top. Please specify any other option desired. (See pages 2 and 3 for complete fabric list.)

How to Order Sleeves

Length
593 - Fabric
GR - Wrist Option
AA

Sleeve Lengths

589	7"
590	9"
591	12"
592	14"
593	18"
595	23"
1529	(cap sleeve) 29"

Sleeve Fabric

AKV	Aluminized Kevlar®
ARH	Aluminized rayon heavy
CL	Chrome leather
BD	Blue denim, non-FR
FRD	Fire resistant duck
GR	Green FR-7A cotton
GW	Green FR-7A twill
HY	Hycar
KTW	Kevlar® twill
KV	22 oz. aramid blend
NMX-9.5	9.5 oz. Nomex® III A
NS	FR navy sateen

Sleeve Options

A	2 1/4" blue-gold elastic, one end
B	1/2" white serged elastic, one end
C	Hidden elastic, one end
D	Adjustable snap
E	2 1/2" x 1" Velcro® tab closure, one end
F	Adjustable Velcro® strap, one end
G	Full Velcro® closure running length of sleeve
H	Adjustable arm strap
I	Two-ply black wool knit cuff
J	Two-ply cotton knit cuff
K	Two-ply Kevlar® knit cuff
L	Split snap wrist

18" Green FR Cotton w/ 2 1/4" Elastic



593-GR-AA

23" Green FR Cotton w/ 2 1/4" Elastic



595-GR-AA

18" Green FR Cotton w/ 1/2" Elastic



593-GR-BB

23" Green FR Cotton w/ 1/2" Elastic



595-GR-BB

	18" LONG	18" LONG	18" LONG	23" LONG	23" LONG	23" LONG
	3/8" White elastic at each end	2 1/4" Blue/gold elastic at each end	Kevlar® knit wrist with thumb hole and 2 1/4" elastic top	3/8" White elastic at each end	2 1/4" Blue/gold elastic at each end	Kevlar® knit wrist with thumb hole and 2 1/4" elastic top
9 oz GREEN FR-7A®	593-GR-BB	593-GR-AA	593-GR-KWTHA	595-GR-BB	595-GR-AA	595-GR-KWTHA
12 oz GREEN FR-7A®	593-GW-BB	593-GW-AA	593-GW-KWTHA	595-GW-BB	595-GW-AA	595-GW-KWTHA
BLUE DENIM	593-BD-BB	593-BD-AA	593-BD-KWTHA	595-BD-BB	595-BD-AA	595-BD-KWTHA
8 oz KEVLAR®	593-KTW-BB	593-KTW-AA	593-KTW-KWTHA	595-KTW-BB	595-KTW-AA	595-KTW-KWTHA
8 oz TUFFWELD®	593-TW-BB	593-TW-AA	593-TW-KWTHA	595-TW-BB	595-TW-AA	595-TW-KWTHA
11 oz CARBONX®	593-CX-BB	593-CX-AA	593-CX-KWTHA	595-CX-BB	595-CX-AA	595-CX-KWTHA

Sleeves

Nylon Cane Mesh Sleeves

Cut resistant. Two-ply nylon mesh sleeve.
Quick-release Velcro® fasteners provide adjustability.

When ordering, specify 692-length-color-size.

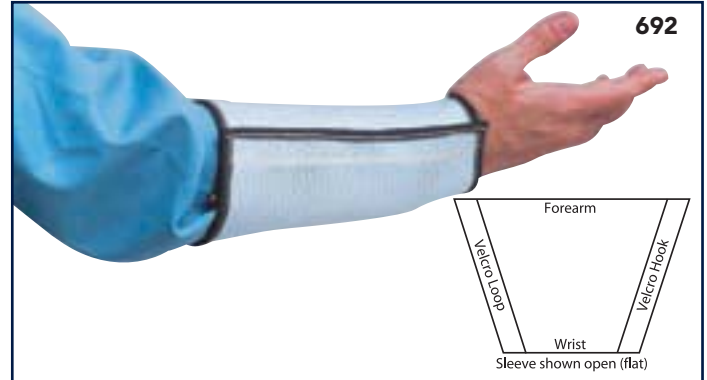
Lengths available: **6", 7", 8", 9", 10", 12", 18"**

Colors available: **Black or white**

Sizes available: **S, M, L, XL, XXL**

Nylon Cane Mesh Sleeves Sizing Chart

Size	Wrist Circumference	Forearm Circumference in 7" Sleeve Length	Forearm Circumference in 9" Sleeve Length
S	8"	12"	13"
M	9"	13"	14"
L	10"	14"	15"
XL	11"	15"	16"
XXL	12"	16"	17"



Steel Reinforced Arm Protectors

Wool-Lined Leather Sleeve.

785 With steel-stapled patch (shown)

786 With plain leather patch

Steel-stapled leather sleeve (unlined).

586 7"

587 9"

588 11"

Specify Velcro® or buckle fasteners.



Tubular Knit Kevlar® Sleeve

Two-ply knit Kevlar® sleeve provides superficial cut and burn protection for the forearms. Washable with minimal shrinkage and virtually no loss of their protective properties.

When ordering, specify TKK-length-thumb option.

Lengths available: **10", 14", 18"**

Specify option: **TKK=plain, TKK-T=thumb slot,**

TKK-A=thumb hole

Also available in two-ply NON-FR cotton.



H-9 Arm Protector

Heavy woven cotton (hose material) arm guard.

Style: H-9 for 9"

H-11 for 11"



Plastic Arm Guards

High impact, transparent plastic arm guards. No straps, buckles or snaps to get in the way. Sizes small, medium, large and extra large.

Style A Regular 7 1/2" Turned at wrist only

Style B Regular 7 1/2" Turned at both ends

Style C Boner 10" Full forearm, turned at both ends.





Knitted Hoods



Nomex® Blend

NFPA 1971 current addition approved hood. 2-ply Nomex®/Lenzing FR® blend. Standard long cut style to meet NFPA, or Flared style for greater coverage.

Style KN-51-NFPA (pictured)
Style FL-KN-51



Nomex® Blend

Short style hood in 1-ply or 2-ply Nomex®/Lenzing FR® blend.

Style KN-52 (pictured, 1-ply)
Style KN-50 (2-ply)



CarbonX® Classic

Classic cut meets NFPA 1071 requirements. Superior protection. Non-flammable, non-melting. ATPV of 23 cal/cm².

Style KC-51



CarbonX® Ultimate

Ultimate cut meets NFPA 1071 requirements. Superior protection. Non-flammable, non-melting. ATPV of 23 cal/cm². Additional chest and shoulder coverage.

Style KCF-51



PBI® Blend

NFPA 1971 current addition approved hood. 2-ply PBI®/Lenzing FR® blend. Standard long cut style to meet NFPA (pictured), or Flared style for greater coverage.

Style PBI-51 (pictured)
Style FL-PBI-51 (flared)



Cold Weather

PBI® blend external and Lenzing FR® blend internal. Provides both flame resistance and protection from cold weather.

Style 2001



Hats, Hoods and Spark Deflectors

All spark deflectors are available in any of our fabrics. Most popular are FR cottons (which are pictured), Nomex® and aluminized fabrics.

ESD-690



ESD-690

Economy strap design spark deflector. Four webbing straps loop over hard cap suspension and snap in place.

690



690

Deluxe Velcro™ design spark deflector. Four Velcro™ straps attach FR green band to inside of hard cap suspension. The removable deflector attaches to the green band with Velcro™.

688



688

Spark deflector fits over hard cap and is held in place with an elastic band.

Spray Sock



SS-PH

Painters' Hoods, Spray Socks. 100% cotton, not fire resistant. 16" length. Packed 72 ea. per box.

Caps



646

Baseball style caps. Available in assorted cut and flame resistant fabrics. Also available with Legionnaire-style back flap.

Tally Hoods



648-GW-SP

Open face hood, Velcro® front. Available in a variety of fabrics. Standard design is 1-ply. Pictured (left) is our special 2-ply with button holes. (Style 648-GW-SP)



648

Velcro® front

Aluminized Hoods



0647-(Fabric)

Complete head and shoulder coverage. Large 7" x 11" window opening with replaceable gold film and Lexan® window.



220-(Fabric)

7" x 11" lift front window and shoulder slits.



647-(Fabric)

4½" x 5¼" window. Comes standard with Pyrex® glass and a polycarbonate inner plate.

Hood Information

Hoods on this page are constructed around a hard shell which provides both structure and a head ratchet. Windows are replaceable and positioned far enough away from the face to allow room to wear safety glasses or a face mask underneath. Air fed supplies can be fitted into the hoods. Hard hat or cap clips can be installed, please specify.

Wide View Aluminized Hood

WV-647

Provides maximum peripheral vision. Hood is designed to be worn over a hard cap. Excellent for radiant heat. Not recommended for areas exposed to heavy molten splash. 40% greater peripheral view than standard 7" x 11" hoods.



Welding Helmet

647-A

Thermal welding helmet with 4½" x 5¼" window.



Sandblast Hood

647-GFRD

Canvas duck material fabricated over a welding helmet with ratchet headgear. Lexan® window with 50 mesh screen front. Protects head and shoulders from rebounding particles and abrasives.

Approved respirator must be used in conjunction with the Sandblast Hood.



Short Cape Leather Welding Helmet

222-CL

2" x 4¼" nylon lift front. Retainer and drop down ratchet headgear. Complete with shade #10 green glass window and protector plates.



Liberty Heat Resistant Gloves

Unique heat resistant gloves for use in Foundries, Heat Treating Departments, Molding, Casting, Steel Mills, Welding and Assembly lines etc. Durable, Pliable, Comfortable and Economical protection up to 500°F.

All gloves are full fourchette construction. The excess fourchette leather stretches out like an accordion as heat exposed finger and palm leather shrinks. This design maintains pliability and comfort.



Style 111-GL & 113-GL

2-Ply construction combines special tan leather and a full wool liner to provide momentary 500°F protection. These lightest weight designs offer the most dexterity in the Liberty series of gloves.

11 Inch 2 ply glove Style # 111-GL

13 Inch 2 ply glove Style # 113-GL



Style 211-GL & 213-GL

3-Ply construction provides 500°F protection for extended periods. Our 3-ply gloves are made with a layer of self extinguishing heat resistant fabric between the leather shell and the wool lining.

11 Inch 3 ply glove Style # 211-GL

13 Inch 3 ply glove Style # 213-GL



Style 213-DW

4-Ply construction provides similar heat protection for extended time. This is one of our most popular gloves to protect against heat associated with casting operations. The unique design of our pattern allows good dexterity even in a 4 layer system.

13 inch 4 ply glove Style # 213-DW





High Heat Gloves

GLOVE OPTIONS

	SINGLE LAYER	LEATHER REINFORCED PALM	KEVLAR® REINFORCED PALM
11" GLOVE	231-(fabric choice)	FA-231-(fabric choice)	FB-231-(fabric choice)
14" GLOVE	234-(fabric choice)	FA-234-(fabric choice)	FB-234-(fabric choice)
18" GLOVE	238-(fabric choice)	FA-238-(fabric choice)	FB-238-(fabric choice)
23" GLOVE	243-(fabric choice)	FA-243-(fabric choice)	FB-243-(fabric choice)

MITTEN OPTIONS

	SINGLE LAYER	QUILTED PALMS	DOUBLE LAYER PALMS
11" MITT	171-(fabric choice)	Q171-(fabric choice)	184-11-(fabric choice)
14" MITT	174-(fabric choice)	Q174-(fabric choice)	184-14-(fabric choice)
18" MITT	178-(fabric choice)	Q178-(fabric choice)	184-18-(fabric choice)
23" MITT	183-(fabric choice)	Q183-(fabric choice)	184-23-(fabric choice)

All gloves and mittens are available in 11", 14", 18", and 23".



22 oz. PBI® Blend

22 oz. Polybenzamidazole blend offers higher working temperatures, near fiberglass levels, with superior abrasion resistance. Fully wool lined.

Part #

- 234-PBI22** 14" Glove
- FA-234-PBI22** 14" Glove with Leather Reinforcement
- 174-PBI22** 14" Mitten
- 184-PBI22** 14" Mitten with Double Palm

Also available in 45 oz. Please call for pricing.

22 oz. Heat Blend

22 oz. Para-Aramid and fiberglass blend. 400-600°F working temperature. Abilities to resist higher temperature intermittently. Good abrasion resistance. Fully wool lined.

Part #

- 234-KV** 14" Glove **MOST POPULAR**
- FA-234-KV** 14" Glove with Leather Reinforcement
- 174-KV** 14" Mitten
- 184-KV** 14" Mitten with Double Palm



234-AKV-ZP Combo glove. 19 oz. aluminized Kevlar®-aramid fiber blend on back for up to 2000°F radiant protection. 35 oz. Zetex Plus® palm for short duration up to 1800°F. Moderate to poor abrasion resistance.



234-AZ-Z Combo glove. 35 oz. Zetex® glass on palm for short durations up to 1000°F. 25 oz. aluminized Zetex® for up to 2000°F radiant protection on back side. Moderate to poor abrasion resistance.



234-AKV-KV Combo glove. 19 oz. aluminized Kevlar®-aramid blend on back for near 2000°F radiant protection. 22 oz. Kevlar®-aramid blend palm for working temperature of 400°F-600°F and good abrasion resistance.



Gloves and Mittens

234-Z 35 oz. Zetex® fiberglass. Short durations up to 1000°F. Moderate to poor abrasion resistance.



234-ZP 35 oz. Zetex Plus® treated fiberglass. Short duration up to 1800°F. Moderate abrasion resistance.
FD-234-ZP Double layered palm gloves are recommended when working with higher heats.



234-V 36 oz. Vertex™ vermiculite coated fiberglass. Short durations up to 2000°F. Moderate abrasion resistance. (Shown with steel mesh reinforcement for better abrasion resistance. 234-V-SSM.)



234-GL 26 oz. white generic glass fabric. Short durations up to 1000°F. Poor abrasion resistance.



234-KTW 8 oz. Kevlar® twill. Working temperature of approx 500-600°F. Superior abrasion resistance. Good dexterity.



234-KT 22 oz. Kevlar® terry. Working temperature of approx. 600°F. Superior abrasion resistance.



234-PBI™ Polybenzamidazole blend available in 22 oz. or 45 oz. Higher working temperatures near fiberglass levels with superior abrasion resistance. 45 oz. PBI offers a thick barrier for longer heat duration but less dexterity.



234-MT Terry cotton "mock twist" glove for lower temperatures. Can be used as a baker's glove.



234-THL Brown thermal leather withstands premature hardening up to 500°F. Good abrasion resistance. Wool lined.



234-AKV 19 oz. aluminized Kevlar®-aramid fiber blend. Up to 2000°F radiant heat. Some sparks and molten splash. Good abrasion resistance.



234-AZ 25 oz. aluminized Zetex®. Up to 2000°F radiant heat. Some spark and splash. Moderate abrasion resistance.



234-ARH 19 oz. aluminized rayon. Up to 2000°F radiant heat. Some sparks and molten splash. Moderate abrasion resistance.



Cover Mitts

Economical slip-on glove and mitten savers. Reversible unlined cover mitts.

105-CTJ 9" closed top jumbo cover mitt. For over mittens.



105-OTJ 8" open top jumbo cover mitt. For over gloves.



WM-105-CTJ-10-V Wire mesh covered closed top Vertex™ cover mitt for over mittens. For high heat and abrasion resistance.





Domestic Welding Gloves

901-Alum Gunn cut, aluminized leather back. Wing thumb with welting. Aluminized back radiates away a percentage of heat to keep hand cooler. 14" length.



Wool Lined Welder's Glove

Welted, wool lined, Kevlar® sewn.

Part 901-CL

125-WS Gunn cut, side split cowhide. Wing thumb with welting. Cotton lined. Size large. Specify length: 14", 18" or 23".



SN-901-ALUM & SN-88 PAD

Designed for hand protection under severe heat of heavy MIG welding arc gouging, multiple passes or preheated weldments. Replaceable snap-off back pad for extended wear. SN-88 Kevlar® blend pad radiates up to 2000°F radiant heat.



WSOF-Alum One finger mitt version of our 901-ALUM. Mitten style with freed trigger finger. 14" length.



Glove Protector

88-Alum Two-ply glove protector economizes by extending the wear of your gloves, while adding protection from radiant heat and splatter.



Spark Cuff

A practical, comfortable way to keep sparks out of glove or mitten cuffs. We can attach cuff to our gloves or yours. Specify fabric. Specify glove.



Welding Beanies

640

Welding beanies for head protection from sparks. Available in leather or flame retardant cottons. Specify material and size.



Rod Holder

RH-CL

Reinforced bottom with leather loop and snap hook (rust leather).

Imported Welding Gloves



Gray Deer Skin

Insulated deer split back, unlined reverse grain leather palm. Superior dexterity and comfort. Reinforced palm. Kevlar® stitched.

Part # SA3-D



Side Split Cowhide

Heat-resistant cow split leather. Gunn pattern, wing thumb, one-piece back. Welting in vulnerable seams. Kevlar® stitched. ****Most Popular****

Part # SA3-1000



Side Split Cowhide

Reinforced thumb and palm area. Fully sock lined. Kevlar® stitched.

Part # SA3-B



Side Split Cowhide

Thumb Strap. Fully sock lined. Kevlar® stitched.

Part # SA2-R



Shoulder Split Cowhide

Fully sock lined. Fully welted seams.

Part # SA1-GY



Aluminized Back & Thumb

Reflects radiant heat. Fully sock lined. Reinforced palm. Kevlar® stitched.

Part # SA2-ALUM



18" Long

Cowhide split. Fully sock lined. Protects forearm to elbow. Velcro® strap at cuff. Reinforced palm. Kevlar® stitched.

Part # SA2-18



Jumbo Welder's

Cowhide split. Fully sock lined. Wing thumb. Fully welted. Kevlar® stitched.

Part # SA2-JMB

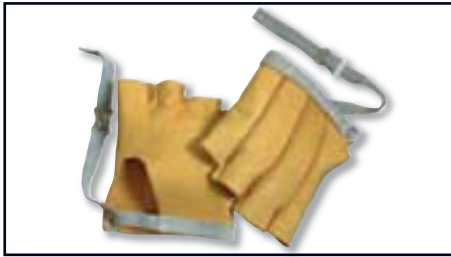


Kid Grain

Style	Size	Part #
Short 2" cuff	S-XL	TIG-KG-2
Long 4" cuff	S-XL	TIG-KG-4



Anti-Vibration & Fingerless Gloves



Cable Former's

Grain leather half gloves with adjustable wrist strap. Thumb free style. Available with or without split leather palm reinforcement.

Sizes S-XL Part #

21	Plain Palm
23	Reinforced Palm



Anti-vibration pad

Anti-vibration - reversible - curved palm and heel pad with elastic back straps. Available in grain, pig, or split leather.

One Size	Part #
SX-02	Split Leather
GX-02	Grain Leather (shown)
PX-02	Pig Leather



Fingerless Anti-vibration

Durable pig leather shell with anti-vibration palm. Tailored patterns provide unique comfort.

Size	Part #
S-XL	24SPA



Chemical Gloves

Part # 10028 Size S-XL

Petroleum Handler's or Limited Exposure glove offers a unique combination of superb liquid resistance, flame resistance, breathability, and dexterity.

Liquid Resistance is provided by the sealed barrier of EPTFE laminate that passes the NFPA Chemical Penetration Resistance Test.

Flame Resistance is provided by full outer shell made from NOMEX® fabric laminate and reinforced with fire resistant leather.

Breathability (or moisture vapor transport) is provided in all materials used in both the outer shell and barrier lining.

Dexterity is maintained by using materials that are thin, flexible and lightweight.



Benefits:

- Flame-resistant outer shell
- Heat-resistant outer shell and inner lining (500° F)
- Whole glove barrier (seams sealed on barrier lining)
- Liquid resistance to POL's (Petroleum, Oils, and Lubricants)
- Passes the NFPA 1971 chemical penetration resistance for: Sulfuric Acid, Gasoline, Hydraulic Fluid, Chlorine Solution, AFFF (Aqueous Fire Fighting Foam), Water.
- Comfortable (breathable to allow sweat vapor to escape)
- Dexterous due to the thin, flexible and lightweight materials
- Washable materials and quick dry out time compared to rubber gloves

Steel Reinforced Gloves/Mitts



Style 4" Gauntlet
Part # 1644 (shown)

Style 2" Band
Part # 1604



Style 4" Gauntlet
w/ Heavy Nylon Strips

Part # 1644-NY



Exceptionally strong because it is reinforced with steel ribbons over strips of tough leather, with thumb patch, closed with steel thread.

Part # 1681



Hand Pads Cool protection with the fit of a mitten, split leather construction. For bare hand or over thin gloves.

Part # 715 Open back, plain, no patch

Part # 717 Open back, plain patch

Part # 716 Open back, steel-stapled patch

Animal Handler's Gloves



Mink Handler's Glove

Designed in cooperation with local mink farmers. These mitts come standard with a full, heavy, split leather shell, heavy sherpa liner, and a stiff inner cuff.

Part # 001PSS



Monkey Handler's Glove

Protection for monkey handlers in primate labs, zoos, medical research facilities, and veterinarians. Steel stitched reinforced hand.

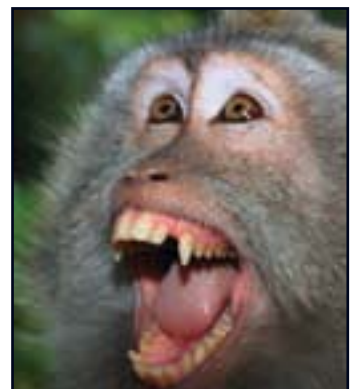
Part # 001MHG



Bird Handler's Glove

Thick pliable leather with a Kevlar® lining offers protection and mobility for bird handling.

Part # 238-FLC





Hand Protection

Fingerless Gloves & Cable Former's Gloves

Grain leather half-gloves with adjustable wrist strap.

- 21** No thumb
- 22** With thumb
- 23** Split leather patch on palm, no thumb
- 24** Split leather patch on palm and thumb with thumb



Open-Back Hand Pads, Thumb Type

Cool protection with the fit of a mitten, split leather construction. For bare hand or over thin gloves.

- 715** Plain
- 716** Steel stapled patch
- 717** Plain patch
- 27** Double leather, steel reinforcement on palm and thumb. Wool lined. Adjustable strap.



Oval Hand Pads with Slit

For handling hot, rough and abrasive materials. Available in 3 sizes, with or without steel staple reinforcement, and single-layer or multi-layered.



	Plain 1-ply	Steel Stapled 1-ply	Plain 2-ply	Steel Stapled 2-ply
7½" x 10¾"	711	S-711	2P-711	2P-SS-711
7" x 9"	707	S-707	2P-707	2P-SS-707
6" x 8½"	700	S-700	2P-700	2P-SS-700

Square Hand Pads

One layer of wool quilted between two layers of fabric, i.e. Fabric-Wool-Fabric.

Specify fabric: Kevlar®, Zetex Plus®, Zetex®, Blackflex, leather or other.

Available in 4 sizes.

- 709-6** 6" x 6" **709-10** 10" x 10"
- 709-8** 8" x 8" **709-12** 12" x 12"



Reversible Hand Pad

Split leather hand pad 6" long. Reversible style gives double life.

- 44** Plain (shown)
- SR44** Steel staple reinforced
- P44** Plain patch reinforced



Baker's Pad—Terry

8" x 12", two-ply 24 oz. terry serged (loop out) sewn around outer edges.

- BP-1** With slit
- BP-2** With 2 elastic straps (shown)



Hand Protection

Thumb Type Hand Pad

097 Grain leather pad with split leather palm and thumb patch. Elastic back strap. Steel sewn.



Reinforced Hand Pad

Split leather hand pad with palm patch. Steel sewn thumb type. Elastic back strap.

83 (shown)
J-83 Jumbo, fits over gloves



Palm Guard

Split leather palm guard. No thumb or fingers. Steel sewn. Elastic back strap.

82 (shown)
J-82 Jumbo, fits over gloves
JS-82 Jumbo, steel reinforced



Anti-Vibration

Anti-vib-Viscolas® or Sorbothane® hand and wrist protection. See price list for complete list of products.

SX-01 Reversible oval shock pad with elastic; for palm area
25 Bundler's style anti-vib guard
GX-04 Grain leather fingerless glove style anti-vib



*Sorbothane® is a plastic polymer based on propylene oxide and possesses some unique properties: It distorts readily and has retarded recovery, absorbs up to 95% of impact energy with virtually no recoil and behaves like a fluid, being capable of accepting and absorbing multi-axial and torsional stress.

Bundler's Hand Guards

Quilted leather patch over palm. Ideal protection where the free use of fingers is required. Protects against cuts and burns from handling bundles, crates, paper, and twine. Adjustable Velcro® closure standard; snap buttons available.

BHG Regular (shown)
SR-BHG Steel staple reinforced
NP-BHG No patch



**MOST
POPULAR**

Machine-Knitted Gloves

Insulating materials give protection against heat or cold. Knit wrist, reversible style. Can be worn under other gloves. Excellent dexterity. (Shown left to right)

W-100 Wool glove liner
K-100 Kevlar® for added abrasion resistance
C-100 Cotton, general purpose
K-100-PD Kevlar® with plastic dots for added grip



Glove Protector

Split leather glove saver. Use over cotton, hot mill, or leather work gloves. Extra protection for index finger, palm, and thumb. Elastic back.

84-1 One finger (shown)
84-2 Two finger—index and second





Mechflex™ Mechanic's Gloves



IMPACT-X

- Durable synthetic leather palm & fingers
- Shock-absorbing gel padded palm
- Neoprene knuckle protector
- Anti-slip palm and fingertip patches
- **Style # MX-52(size)**, available S-2XL



SYNTHETIC

- Durable synthetic leather palm & fingers
- Anti-slip palm patches
- Reinforced thumb area
- Ventilated finger walls
- **Style # MX-50(size)**, available S-2XL



GOATSKIN

- Durable goat grain leather palm and fingers
- Anti-slip palm and fingertip patches
- Leather reinforcement on thumb crotch
- **Style # MX-56(size)**, available S-2XL



GOATSKIN

- Supple goat leather palm and fingers
- Anti-slip palm patch
- Leather reinforcement on thumb crotch
- **Style # MX-55(size)**, available S-2XL



SLIP-ON

- Supple goat grain leather palm
- Easy slip-on style
- Leather reinforcement on thumb crotch
- **Style # MX-57(size)**, available S-2XL



HI-VIS

- Hi-Vis back
- Goat skin palm and fingers
- **Style # MX-80(size)**, available S-2XL



3 FINGERLESS

- Synthetic leather palm and fingers
- Anti-slip palm patch
- Leather reinforcement on thumb crotch
- **Style # MX-59(size)**, available S-2XL



WINTER

- Supple goat leather palm
- Water and wind resistant
- Reinforcement on thumb crotch
- **Style # MX-62(size)**, available S-2XL



WINTER

- Pig skin palm and fingers
- Water and wind resistant
- Reinforcement on thumb crotch
- **Style # MX-60(size)**, available S-2XL

Cold Climate/Freezer Work Driver's Gloves



DEER PALM, FLEECE BACK

Full sock insulated. Elasticized wrist.
Style: Deer Split Palm Fleece Back
Part # **CC4-DS-FB**



SUPPLE PIG GRAIN

Full sock insulated. Elasticized wrist.
Style: Pig Grain Drivers
Part # **CC4-PGD**



PIG GRAIN PALM

Full sock insulated. Knit wrist.
Style: Pig Leather Palm
Part # **CC4-PLP**



HIGH VISIBILITY

Brushed pig skin palm, reflective knuckle strap, full sock insulated, high-vis safety cuff and knit wrist.
Style: High Visibility Brushed Pig Skin
Part # **CC4-HV-BP**



DEER SPLIT LEATHER

Full sock insulated. Heavy foam lined.
Knit wrist.
Style: Deer Split Freezer Glove
Part # **FG4-DS**
Available with Latex Palm
Part # **FG4-DLTX**



REVERSE GOAT GRAIN

Full sock insulated. Heavy foam lined.
Knit wrist. Double insulated back.
Style: Reverse Goat Freezer Mitt
Part # **FG5-RG**



DOUBLE PALM

Style: Double Palm
Part # **WK-DP**



BUCK SKIN DRIVER'S

Keystone thumb, unlined, elastic back.
Style: Buck Skin S-XL
Part # **DG-BS**



COW GRAIN DRIVER'S

Durable soft-top grain. Keystone thumb, unlined, shirred elastic back.
Style: Cow Grain S-XL
Part # **DG-CG**



Rubber Insulated Lineman's Gloves

Rubber Insulated Gloves

Refer to ASTM D 120-02
Standard Specification for
Rubber Insulating Gloves
and ASTM F 496-02
Standard Specification for
In-Service Care of Insulating
Gloves and Sleeves.

How to Order

Part# LRIG-Class-Length-Size

Example: **LRIG-2-14-10**

Class 00, 0, 1, 2, 3, and 4

Length 11", 14", 16", and 18"

Size 8, 9, 10, 11, and 12

Also available in half sizes.

Max. use		
Proof-test Voltage		
Class	(A_C)	(A_C)
00	2,500	500
0	5,000	1,000
1	10,000	7,500
2	20,000	17,000
3	30,000	26,500
4	40,000	36,000



Class 0 Glove Kit

Class 0 Rubber Glove	LRIG-0-11-(size)
Leather Protector	PG-0-ADJS-(size)
Glove Bag	GB-12
COMPLETE KIT	GK-0-11-(size)

Class 2 Glove Kit

Class 2 Rubber Glove	LRIG-2-14-(size)
Leather Protector	LLPG-12-(size)
Glove Bag	GB-15
COMPLETE KIT	GK-2-14-(size)

Insulated Rubber Gloves

	11" Length	14" Length	16" Length	18" Length
Class 00	LRIG-00-11-(size)	LRIG-00-14-(size)	n/a	n/a
Class 0	LRIG-0-11-(size)	LRIG-0-14-(size)	n/a	n/a
Class 1	n/a	LRIG-1-14-(size)	LRIG-1-16-(size)	LRIG-1-18-(size)
Class 2	n/a	LRIG-2-14-(size)	LRIG-2-16-(size)	LRIG-2-18-(size)
Class 3	n/a	LRIG-3-14-(size)	LRIG-3-16-(size)	LRIG-3-18-(size)
Class 4	n/a	n/a	n/a	LRIG-4-18-(size)

Leather Protector Gloves

	10" Length	12" Length	14" Length	16" Length
Low Voltage	PG-0-ADJS	n/a	n/a	n/a
High Voltage	LLPG-10-(size)	LLPG-12-(size)	LLPG-14-(size)	LLPG-16-(size)

Leather Protector Gloves

Refer to ASTM F 696-02, Standard
Specification for Leather Protectors for Rubber
Insulating Gloves and Mittens.



Class	Length	Sizes	Part Number
Low Voltage	10"	8 thru 12	PG-0-ADJS-(size)
High Voltage	12"	8 thru 12	LLPG-12-(size)
High Voltage	14"	9 thru 12	LLPG-14-(size)
High Voltage	16"	10 thru 12	LLPG-16-(size)

Remember, ASTM specifications require a minimum distance of 1" per 10,000 volts of A-C proof test between the edge of your rubber glove cuff and the edge of your protector cuff.

Face Shields/Lenses



8 Cal Face Shield Unit

Face Shield	WV-ARC-XL
Cap Bracket	HB-2-CAP
Hard Cap	E2RW-(Color)
COMPLETE KIT	SW-WVK-(Color)



10 Cal Chin Face Shield Unit

Face Shield	WV-CHN-XL-CN
Chin Cup	SW-CN-G
Cap Bracket	HB-2-CAP
Hard Cap	E2RW-(Color)
COMPLETE KIT	SW-WVCK-(Color)

Storage Bag

Fleece lined storage bag with drawstring. Sized to accommodate face shield with hard cap.
Style # SW-SB



Arc Flash Protective Face Shields, Separate Components

Color	Configuration	Face shield only part number	Hood Replacement Face shield w/Velcro	To be used for following product	Coating
Extra light green	Single pane	WV-ARC-XL	n/a	8 cal face shield	Anti-fog
Extra light green	Single pane	WV-ARC-XL-CN	n/a	10 cal face shield w/chin	Anti-fog
Extra light green	Single pane	WV-ARC-XL	WV-ARC-XL-R	12 cal hood	Anti-fog
True color green	Single pane	WV-ARC-TC	WV-ARC-TC-R	20 cal hood	Anti-fog
True color green	Dual pane	WV-ARC-TC2	WV-ARC-TC2-R	36 cal hood	Anti-fog
True color green	Dual pane	WV-ARC-TC2	WV-ARC-TC2-R	40 cal hood	Anti-fog
Amber	Single pane	WV-ARC-AM	WV-ARC-AM-R	51 cal hood	Anti-fog
Amber	Dual pane	WV-ARC-AM2	WV-ARC-AM2-R	74 cal hood	Anti-fog

Head Gear and Cap Brackets



High Temperature Ratchet

Adjustable, higher temperature applications.

6" Spark Guard

Part # HG-6-HT

Adjustable Ratchet

3" Spark Guard

Part # HG-3-R

Gold Window

10"x20"x.060" formed Lexan. Metallized gold on clear. High temperature, radiant heat reflection, UV and infrared protection. Window only.

Style

Metallized Gold on Clear

Part # WV-647-GOLD



Brackets

Description	Part Number
Universal Cap Bracket	HB-2-CAP
Slotted Cap Bracket	HB-2-SLT
Universal Hat Bracket	HB-2-UNV



Snakebite Protection/Finger Guards

Heavy shoes are recommended for foot and ankle protection.



Snakeproof Chaps



13045—Inseam

Cordura® nylon available in regular (25" thigh) or husky (28" thigh) and 27"- 30", 30"- 33", 33"- 36" inseams.

Plastic Snake Leggings



130464

19" front, 15" back.
Hard plastic. Molded in shape.
Olive color.

Canvas Snake Leggings



130460

17" front, 12" back.
With webbing and buckles.

Finger Guards

A G-7018-CE

Grain leather, closed end, wrap around

B S-7018-CE

Split leather, closed end, wrap around

C G-7002-OE

Grain leather, open end

D SF-7000-657-OE

Split leather, open end

E G-7012-CE

Grain leather, closed end, flat

F S-7012-CE

Split leather, closed end



A B C



D E F

Steel-Studded Guards

From left to right, below

H-7005-OE

Grain leather, horizontal steel studding

V-7007-OE

Grain leather, vertical steel studding

D-7022-OE

Grain leather, diagonal steel studding



SF-7000-657-OE

Split leather, open end

Thumb Guards

(Not pictured)

ST-7000-OE

Split leather, open end

S-7019-CE

Split leather, closed end, wrap around

GT-7000-OE

Grain leather, open end

G-7019-CE

Grain leather, closed end, wrap around



Finger guards are available in a variety of fabrics and styles. For example Kevlar®, wool, rubber and cotton. Please call our customer service department with any questions you may have.

Chainsaw Protection

Chainsaw Chap

Multi-layered Kevlar® with Cordura® nylon outer shell. Two-inch wide heavy nylon belt with adjustable quick release Nexus® clip. Five-compartment tool pocket with snap flap closure. Made in accordance with U.S. Forest Service Specification No. 6170-4E. Designed to clog and block the cutting chain. Added protection is provided if the Kevlar® material is pulled into the drive sprocket, jamming it. U.S. Forest Service tests show protection up to 3,300 feet per minute. Chap is not a substitute for safe operating procedures. It is the buyer's responsibility to determine if this product will be adequate protection.

Measure length from waist down.

2600-28" 2600-36"
2600-32" 2600-40"



Also available
in Orange

Chainsaw Gloves

CSG-3

Grain pig leather palm. Back is 1-ply Kevlar® jersey and 3-ply ballistic Kevlar®.

Available in sizes XS-XL.



Metatarsal Guard



LW-800

Wear with steel toe safety shoes to extend impact protection to instep. Aluminum alloy with rubber padding.

Foot Guard



LW-200

Protect entire front of foot from impact hazards. Aluminum alloy, rubber strap, rubber toe clip.

Steel Toe Guards



LW-702

Steel guard for maximum toe protection. Quick fastener, adjustable web strap.

Shin Guard



LW-303

Aluminum alloy, padded top and bottom, fastened with web straps.

Shin-Instep Guard



LW-323

Aluminum alloy, padded with sponge rubber. Fastened with web straps.

Knee-Shin-Instep Guard



LW-334

Plastic, padded with sponge rubber. Fastened with web straps.

Plastic Toe Guard



LW-505

Lightweight toe protection. Does not replace steel toe shoe protection.



PVC

13 oz. polyester with green PVC coating.
See chemical guideline chart below.

CHEM-0647

Hood
(shown)

CHEM-618

Bib Overall
(shown)

CHEM-SHROUD

Shroud
(shown below)

CHEM-548

Apron 35" x 45"
(not shown)

CHEM-600

Jacket 30"
(shown)

Hycar®

Hycar® (not FR), nitrile medium weight. Very durable, provides good resistance to many acids, solvents and oils. Available in black (shown), yellow, and white.

545-HY-Color 45" Apron

548-HY-Color 48" Apron (shown)

593-HY-AB 18" Sleeve (shown)

Neoprene

Neoprene coated nylon provides good resistance to many acids, hydrocarbons and oils. Available in yellow only.

545-NEO 45" Apron

548-NEO 48" Apron (shown)

593-NEO-AA 18" Sleeve (shown)

564-NEO-50" Surgical style gown

Call our customer service department for information on our full line of Hycar® and Neoprene Protection

Penetration Summary – Green PVC Material

Chemical	Average Sample Thickness (mm)	Test Temperature (Celsius)	Indicator	Result
Hydrochloric Acid	0.382	22.8	pH paper	Pass
	0.392	22.9		Pass
	0.394	23.2		Pass
Sulfuric Acid	0.383	23.2	pH paper	Pass
	0.378	23.2		Pass
	0.383	23		Pass

Non FR Work Apparel/Storage Bags

Coveralls

WK-605-PC (shown)

65% polyester/35% cotton. Pre-shrunk permanent press. Bi-swing back. Concealed 2-way brass zipper front. Seven pocket style with side openings for access to inner clothing. (7³/₄ oz.)

Specify color: white, charcoal, navy blue, spruce green, chocolate brown, postman blue.

WK-605-C

100% cotton. Pre-shrunk. Plain back concealed brass button front. Seven-pocket style with side openings for access to inner clothing. (8¹/₂ oz.)

Specify color: charcoal, chocolate brown, white, natural, navy blue, spruce green, suntan, postman blue, Fisher herringbone stripe (10 oz.).



Office, Lab and Shop Coat

1600 (30") Office Coat (shown)

1700 (40") Lab Coat (shown)

5¹/₂ oz. poly-cotton. Three-pocket style. Matching pearl buttons. Specify color: white, light blue, navy blue.

PC-1800 (42") Shop Coat,
7³/₄ oz. poly-cotton

Specify color: white, navy blue, postman blue, and white with navy blue trim.

C-1800 (42") Shop Coat,
8¹/₂ oz. 100% cotton

Four-pocket style. Concealed brass button front. Specify color: white, navy blue, postman blue, white with navy blue trim, suntan, spruce green, and 10 oz. Fisher Herringbone.



Duffel Bags

907	General Use	18"W x 9 ¹ / ₂ "H x 9 ¹ / ₂ "D
909-J	Jumbo Style	24"W x 13 ¹ / ₂ "H x 13 ¹ / ₂ "D
909	Fire Fighter's Bag	23"W x 11"H x 13 ¹ / ₂ "D

Available with or without shoulder straps.

All bags are available in your choice of Cordura® nylon, nylon on vinyl or vinyl-coated polyester. See Price List for colors.



Storage and Respirator Bags

900	Half Face Respirator	6 ³ / ₄ "W x 8"H x 4 ¹ / ₂ "D
901	Full Face Respirator	9"W x 12"H x 6"D
902	Goggle Cover	6 ³ / ₄ "W x 4 ¹ / ₂ "H x 3 ¹ / ₂ "D

Respirator bags come standard with belt loops. Shoulder strap or waist belt available.





Welding Screens

One-Panel Screens (with legs)

Available sizes (width x height):

- 5' x 4'
- 6' x 4'
- 6' x 5'
- 6' x 6' (most popular, shown)
- 8' x 5'
- 8' x 6'
- 8' x 8'



Improve the levels of safety and productivity at your facility. Choose a system that will protect you from welding and grinding hazards.

All fabrics available as screen inserts. Most popular fabrics are:

12 oz. olive drab, 13 mil. Weldview in assorted colors, fiberglass (plain or coated), and aluminized fabrics.

Screens are attached to frames with nylon beaded ties. Platform legs available for all screens. Casters available, two casters per platform leg.

Two-Panel Screens (platform legs optional)

Available sizes (width x width x height):

- 4' x 4' x 4'
- 5' x 5' x 5'
- 6' x 6' x 6' (shown)
- 8' x 8' x 6'
- 8' x 8' x 8'



Three-Panel Screens (platform legs optional)

Available sizes (width x width x width x height):

- 2' x 4' x 2' x 4'
- 4' x 4' x 4' x 4'
- 3' x 4' x 3' x 5'
- 3' x 6' x 3' x 5'
- 5' x 5' x 5' x 5'
- 4' x 4' x 4' x 6'
- 6' x 6' x 6' x 6' (shown)
- 8' x 8' x 8' x 8'



Four-Panel Screens (with legs)

Available sizes (width x width x width x width x height):

- 6' x 6' x 6' x 6' x 6' (shown)
- 6' x 8' x 6' x 8' x 6'
- 8' x 8' x 8' x 8' x 6'
- 8' x 8' x 8' x 8' x 8'



Weld Strip Doors Replacement Strips and Bulk Rolls

When ordering, please specify material color number.

- Amber (31)
- Aztec Red (32)
- Charcoal (33)

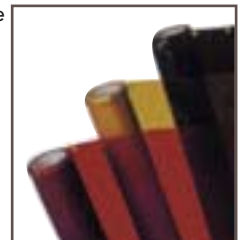
BULK ROLLS		
Size	Stock #	Length
8" x .080"	C8	300
12" x .120"	C12	200

CUT STRIPS (full foot increments — pkg. of 5)	
Size	Stock #
8" x .080"	C8-1
12" x .120"	C12-1

Ready Roll Curtains 16 mil. TRANSPARENT (RR-16)

When ordering please specify material color number.

- Yellow (02)
- Orange (03)
- Grey (04)
- Blue (05)
- Green (06)



Rolls are 25 yards long with grommets on 12" centers. Maximum height 64". Easy attachment to any hook system, cut as needed with any utility knife.

Welding Strip Curtains

For high traffic areas, these PVC Strip Curtains use universal pre-studded, zinc-plated hardware that can economically solve your OSHA and regulatory problems.

When ordering, please specify material color number:











- Amber (31)
- Aztec Red (32)
- Charcoal (33)



8" x .080" 50% OVERLAP
Door Size
4' x 7'
4' x 8'
5' x 7'
6' x 7'
6' x 8'

12" x .120" 67% OVERLAP
Door Size
8' x 8'
8' x 10'
10' x 10'
10' x 12'
12' x 12'

Welding Blankets

Curtains	Material	Weight	Description	Roll Width
	Olive Drab Duck	OD -12 oz. OD -10 oz. OD -14.9 oz.	General use flame, water and mildew resistant. Treated cotton duck. Most economical. 12 oz. is standard. 10 oz and 14.9 oz. are available.	36" 48" 60" 72"
	Weldview	WV - 13-14 mil. Yellow, orange, grey, green and blue	Translucent vinyl, filters most U.V. Reduces visible flash and allows light in work areas. CFM approved.	62"
Blankets	Material	Weight	Description	Roll Width
	Heat Cleaned Glass	HCG -18 oz.	Most economical, lightweight, fiberglass. Melting temperature of 1000°F. Good for light welding protection.	40" 60" 72"
	Generic Glass Cloth – Heavy	GGCH - 35 oz.	Heavier weight fiberglass. Melting temperature of 1000°F. Good for stress relief and moderate molten splash or sparks.	40" 48" 60" 72"
	Blackflex	BF - 23 oz.	Durable material with proprietary coating on two sides. Fiberglass base. 400°F working temperature, 1000°F melting temperature. Good for sparks and slag. Will take higher heats when used on a vertical plane.	40" 60" 72"
	Goldenglass	GLG - 24 oz.	Durable material with proprietary coating on one side. 400°F working temperature, 1000°F melting temperature. Good for sparks and slag.	40" 60" 72"
	Silica Cloth	SC-18 - 18 oz. SC-36 - 36 oz.	Protects from sparks, splatter, and molten metal. Up to 1800°F working temperature. Melting temperature near 3000°F. Good for stress relief. Not recommended for areas with high abrasion.	36"
	Silicone-Coated Fiberglass	SCF - 30 oz.	General purpose, sheds oils, sparks and splatter. Working temperature up to 500°F. Melting temperature of 1000°F. Good abrasion resistance.	60"
	Leather Welding Blanket	CL - 3½ oz. per sq. ft.	Abrasion resistant and durable with good flexibility. Protects from moderate sparks and splatter.	—
	Aluminized Kevlar® Blend	AKV - 19 oz.	Reflects up to 2000°F radiant heat. When used in work area, can minimize heat transmission and provide a more comfortable work environment. Will protect from sparks and splatter when used on a vertical plane.	40"

Vests

See Price List for complete vest information.

Hi-Vis

- Hi-Vis back
- Goat skin palm and fingers
- Style # MX-80-(size), available S-2XL



Indura Vest

ESV-VEST

Economy style with no reflective stripes.
Size large.



Nomex Vest

STD-VEST-SIZE

2" vertical striping on front, 2" horizontal striping on back. Velcro™ front, elastic side closure.



Fire Canister

20H

Fire blanket storage canister. 20 gauge red metal mounts on wall with two screws. Specify if blanket is required.



Wall Bag

E-30-H

High-visibility fire blanket wall bag. Grommets at top allow bag to be mounted to wall. Specify if blanket is required.



Hi-Vis Covers

Bright fluorescent color pinpoints locations of fire extinguishers and hoses. See price list for sizes and styles.



Hi-Vis Lights

Patented light strip offers best visual protection. Capable of blinking or steady light. Velcros onto clothing. Magnetic strip allows attachment to vehicle. (Battery included.)



Fire Blankets

Wool (62" x 84")

First aid, FR wool blanket fits inside both wall bag and canister.

NPN (60" x 80")

Needle punch Nomex® blanket fits inside both wall bag and canister.



Arm Band



Illuminating bands reflect lights of oncoming vehicles after dark. Wear on ankle or arm. Velcro™ closure.

Material	Abbreviation	Weight - Oz./Sq. Yd.	Roll Width	Color	Description	Available Fabrics
Aluminized carbon Kevlar®	ACK	17	40"	AL/blended yel	A combination of carbon and aramid fibers. Good resistance to molten splash. Exceptional abrasion resistance and hot-spot diffusion.	
Aluminized CarbonX	ACX10	10 oz.	58"	AL/WHT	Flexir technology provides superior comfort while maintaining a high level of molten splash and radiant heat protection.	
Aluminized fiberglass	AF	30	60"	AL/WHT	Heavy weight aluminized glass. Recommended for blankets and pads. Good resistance to molten splash.	
Aluminized glass	AG	16	40"	AL/WHT	For use in industrial applications and fire proximity garments. Lightweight and comfortable to wear. Beta fiberglass, satin weave. Gentex #1018.	
Aluminized Kevlar® blend	AKV	19	40"	AL/YEL	Aramid and fiberglass blend. Korspun 1 plain weave. Used in garments where higher temperature than PFR rayon is required. Gentex #1081.	
Aluminized Kevlar® twill	AKT	11	40"		Aramid, Kevlar® twill. Cut resistant, lightweight, durable, heat reflective garments and gloves. Meets MIL-C-87076A Spec. Gentex #1091.	
Aluminized leather	AL	3.5 oz./sq. ft. (approx.)	—	AL/LEA	Split leather with an aluminized layer bonded to one side. Provides radiant heat protection and excellent wearing characteristics.	
Aluminized Nomex®	AN	8.5	40"	AL/WHT	Aramid, Nomex twill. Used in fire proximity garments. Will not support combustion and resists many chemicals. Gentex #1056.	
Aluminized polybenzamidazole	APBI	7	40"	AL/TAN	PBI and Kevlar® blend. Knit ripstop. Lightweight and very flexible fabric for radiant heat protection. Gentex #1098.	
Aluminized Preox®	APX	18	38"	AL/BLK	Preox herringbone/neoprene backed. High temp, garments, blankets and fire curtains. Very good molten metal splash and radiant heat protection. Gentex #1100-3.	
Aluminized rayon (lightweight-herringbone)	AR	15	40"	AL/WHT	PFR rayon, herringbone weave. Good for gloves, garments and blankets for moderate exposure to molten metal splash. Gentex #1006	
Aluminized rayon hvy	ARH	19	40"	AL/WHT	Heavier weight PFR rayon, basketweave. Used for gloves, garments and blankets for moderate exposure to molten metal splash. Gentex #1019.	
Aluminized Zetex®	AZ	25	40"	AL/WHT	Aluminized Zetex® glass fabric. Recommended for applications requiring heat reflectivity and molten splash resistance.	
Blackflex	BF	23	40"/ 60"/72"	BLK	Premium performance fabric, offering strength, durability, and good heat resistance. Designed for blankets, curtains, and welding screens. Protects from sparks and slag.	
Blue denim (FR)	BD1200	11.5 – 12	60"	BLUE	100% cotton denim. Fire resistant. Washable, durable means of protection.	
Blue demin (NON-FR)	BD	10	60"	BLUE & BLACK	100% cotton denim. Not-flame retardant. Excellent for aprons and sleeves which require long-lasting performance.	
Blue duck (FR) non-durable	BLDK	10	60"	BLUE	100% cotton, treated with flame retardant chemical. Must be re-flameproofed if laundered. For light spark protection.	
Brown duck (FR) non-durable	BRDK	14.9	60"	BROWN	Heavyweight 100% cotton, treated with flame retardant chemical. Must be re-flameproofed if laundered. For light spark protection.	
Cane nylon mesh (NOT-FR)	CN		45"	BLK OR WHITE	Cane mesh fabric of 100% nylon. Cool, comfortable protection against rough edges and abrasion. For sleeves and aprons.	
Carbon Kevlar®	CK	16	40"	BLK/YEL BLEND	Carbon content tames the hot spot problem. Tough Kevlar® for strength and abrasion resistance. Sheds minor molten metal splash.	
CarbonX®	CX	10, 11	60"	NAVY/BLACK	Carbon aramid blend. Inherently flame resistant. High limited oxygen index.	
Cordura® nylon	CDN	1000 denier	58/60"	ASST.	Cordura® nylon offers good wear performance, lightweight toughness, resistance to abrasion, tears, rot and mildew.	
Cotton (100%)	C	7–8	60 pre-shrunk	WHT	100% cotton. Preshrunk. Not flame retardant, used for uniforms and work garments.	
Fire-resistant non-durable duck-green	GFRD	14.9	60"	GREEN	Heavyweight 100% cotton. Treated with flame retardant chemical. Must be re-flameproofed if laundered. For light spark protection. Green color.	
Fire-resistant non-durable duck	FRD	10	60"	NATL	100% cotton duck. Treated with flame retardant chemical. Must be re-flameproofed if laundered. For light spark protection. Natural color.	
Fire-resistant non-durable duck.	FRD-14.9	14.9	36"	NATL	Heavyweight 100% cotton duck. Treated with flame-retardant chemical. Must be re-flameproofed if laundered. For light spark protection. Natural color.	
FR9B-Vinex® for aluminum industry	FR9B	8.5	60"	NAVY	Aluminum splash-resistant fabric used for secondary protection. 85% vinyl and 15% polynosic rayon. Inherently flame resistant.	
Generic glass cloth heavy	GGCH	35	40"/60"/72"	WHITE	Glass cloth composed of selected glass fibers, specially woven and treated.	
Goldenglass	GLG	24 or 30	40"/60"/72"	GOLD	For the safety apparel and welding industries. For applications up to 900°F. Excellent abrasion resistance and tensile strength.	
Green 100% cotton (sateen) FR treated. Ammonia cured.	GR	9.5	60"	GREEN, NAVY, YELLOW, ORANGE, GREY, RED	100% cotton. Flame resistant and washable. Protects against flame exposure, light molten splash and sparks, self-extinguishing. 9 to 9½ oz. per sq. yd. FR-7A chemically treated. (Launderable per MFG instructions.) Offers protection in low heat and light spark applications. Intended to be worn under aluminized clothing when exposure is to high heat or molten splash.	
Green ranger twill	GW	11	60"	GREEN, NAVY, YELLOW ORANGE, GREY, RED	(Same description as above-but in 11 oz. wt.) Twill woven cotton. FR-7A chemically-treated, ammonia-cured fabric offers additional thermal protection over the lighter weight cotton (above).	
Heat-cleaned glass	HCG	18 oz. (most popular)	40"/60"/72"	TAN	Popular lightweight fiberglass material for blankets and curtains. (26 oz. available.)	
HI-VIS (PVC) NOT FR (solid hot orange)	HVP	10	60"	HOT ORANGE	High visibility orange PVC. Solid, not flame retardant.	
HI-VIS orange mesh Meets Comm. Std. #181-53	HVM	10	54"	HOT ORANGE	High visibility orange cloth. Mesh, not flame retardant.	
Hycar (NOT FR) Nitrile	HY	MED. WT.	40"	BLK, YEL, WHITE	BUNA N coated fabric. Resists water, many acids, oils and solvents. Black, yellow, white. Excellent lightweight, comfortable protection.	
Indura®	IND	9, 12	60	GREEN, NAVY, YELLOW ORANGE, GREY, RED	100% cotton flame-resistant fabric. Guaranteed FR for the life of garment. Used as secondary protective clothing.	
Indura® Ultra Soft®	US	7, 9, 12	60" ORANGE, GREY, RED	GREEN, NAVY, KHAKI	88% cotton 12% nylon flame-resistant fabric. Guaranteed FR for the life of garment. Used as secondary clothing.	
Kevlar® ballistic	KB	14	50"	YELLOW	Woven ballistic Kevlar® meets U.S. MIL-C-44550 type 11, class 1. Used for cut resistance in safety garments. Not bulletproof. Gentex #1320.	

Material	Abbreviation	Weight – Oz./Sq. Yd.	Roll Width	Color	Description	Available Fabrics
Kevlar® blend	KV	22	40"/60"	YELLOW	Aramid wrapped around a fiberglass core. Provides good cut and abrasion resistance. 600°F working temperature and up to 1000°F intermittently.	
Kevlar® blend	SIL-KEY	22	40"	SILVER/YELLOW	Silva-coated aramid blend. Radiates heat and allows contact up to approximately 600°F. Silva-powered 1-side coated.	
Kevlar® felt	KF	6	60"	YELLOW	100% Kevlar® aramid felt. Excellent thermal protection when used as lining in gloves and mitts.	
Kevlar® mesh	KM	9.5 oz.	60"	YELLOW	100% Kevlar® aramid knitted mesh fabric. Provides cut resistance and ventilation for comfort.	
Silicone coated Kevlar®	RSK	10-11 oz.	60"	RED/YELLOW	Silicone-coated Kevlar® twill. Oil and cut resistant. Suitable for clothing. Flame resistant.	
Kevlar® terry	KT	22	40"	YELLOW	Terry-cloth spun from Kevlar® yarn. Provides heat, cut and abrasion protection.	
Kevlar® tubular knit	TKK	11 yds/lb.	3"	YELLOW	100% Kevlar®. Excellent for double-layered sleeving. Lightweight protection from superficial cuts and minor contact burns.	
Kevlar® twill	KTW	8	40"/60"	YELLOW	Lightweight Kevlar® twill. Very cut and abrasion resistant. Will not support combustion and is resistant to most acids.	
Leather						
Bullskin	BSK	5–6 oz.	—	GREY	“Bullskin” chrome leather. Thick leather offers more abrasion resistance and maximum wear.	
Grain leather	GRAIN	3–3.5	—	CREAM	Soft leather, provides flexibility and dexterity where needed as in finger cots and fingerless gloves.	
Pig grain leather	PG	2.5–3	—	CREAM	Soft and light with good abrasion resistance. Used in gloves and mitts.	
Thermal leather	THL	3–3.5	—	BROWN	Selected side-split leather processed by a dry chemical tanning operation. Specially treated to withstand premature hardening and shrinking when in contact with high heat.	
Split leather	CL	3–3.5	—	RUST or GREY	Chrome-tanned leather from genuine split cowhide. First quality and thickness to offer abrasion resistance and maximum wear. Pearl grey or rust color.	
Stiff leather	SL	3–3.5	—	ASST.	Extra-thick cowhide with a firm finished texture. Smooth, rigid leather provides excellent protection from sparks and metal splash when formed into spat and legging flares designed to cover the upper foot area.	
Modaquilt®	MQ10	10.25, 15	59"	GREY	Flame-retardant quilted fabric. Used as a liner in garments for warmth.	
Neoprene coated nylon	NEO	Med. Wt.	60"	YELLOW	Neoprene-coated fabric protects against most oils, acids, alkalis and caustics.	
Needle-punched nomex	NPN	8	60"	OLIVE GREEN	Comfortable, flame-retardant insulation provides an excellent liner for coats, gloves and mittens. Aramid felt.	
Neo-coated needle-punched nomex	NC-NPN	15	60"	BLACK/OLIVE	The neoprene coating creates a moisture-resistant barrier between the garment and the lining, and retards heat penetration. Aramid felt.	
Nomex III-A	NMX	4.5, 6, 9.5	60"	ORANGE, ROYAL BLUE, GREEN & ASSORTED	Nomex® III A aramid is an inherently flame-resistant, anti-static, fiber-blend fabric. Helps protect workers from flame and reduce static electricity.	
Oasis®	ON	7.5, 10, 12	60"	COOL BLUE/NAVY	Blend of fibers including Lenzing FR and nylon. Molten metal splash resistant fabric.	
Olive drab	OD	14.9, 12, 10	36"/48"/60"/72"	OLIVE DRAB	Fire and water-resistant treated cotton duck. Recommended for blankets, curtains, and tarps.	
Polybenzamidazole & Kevlar® blend	PBI-KV	6, 22, 45	40"	TAN	A high performance organic fiber with unique heat and chemical properties. In thermal protective clothing, PBI offers overall protection due to its low heat shrinkage, excellent flexibility even when charred. Lightweight 6 oz. cloth used for garments; 22 oz. fabric used for high heat gloves and mitts; 45 oz. fabric used for higher heats.	
Poly-cotton 65/35	PC	7.75	60"	NAVY/WHITE	65% polyester, 35% cotton blend. Permanent press. Assorted colors and weights.	
PVC on polyester coated both sides (FR)	CHEM	13	60"	GREEN	Polyester with green PVC coating on both sides. (See chemical chart on page 60.)	
Repro wool	RW-32	32	60"	GREY/BLUE	Inherently flame retardant. Will not support combustion. Excellent thermal protection from sparks and minor metal splash. Chemically processed to enhance flame retardancy. Reprocessed wool.	
Rubber	R	.125" thick	36"	BLACK	Neoprene rubber provides excellent protection in legging and spat flares. Resistant to splash and sparks. Rubber will not curl and has excellent abrasion resistance.	
Silica cloth-18 oz.	SC-18	18	36"	TAN	Flexible silica textile with excellent break strength. Fabric does not melt until temperature exceeds 3000°F. Fire, water, and mildew resistant.	
Silica cloth-36 oz.	SC-36	36	36"	TAN	Same as above — heavier weight.	
Salmon cloth	SAL	18	38"/60"		Lightweight, economical. Used for heat and spray shields, wind curtains, and equipment covers.	
Silicone-coated fiberglass	SC-F	30	60"	RUST	Silicone-coated glass cloth for soft pad fabrication. Welding, weathering, oil, and chemical resistant.	
Tubular knit cotton (NOT FR)	TKC	12.5 yds./lb.	3"	NATL	100% cotton-knitted sleeving material. Keeps arms cleaner and provides minimal thermal protection.	
Tuff-Weld	TW	8 oz.	60"	TAN	Lenzing FR and Kevlar blend. Enhanced strength and protection for superior welding garments.	
Twardon Micro Fiber	TWN	10 oz.	60"	YELLOW	100% Para-Aramid with enhanced comfort and stability at high temperatures.	
Vertex®	V	36	40"	BLUE	A coated blue glass textile offering high temperature resistance. Can be used in a variety of applications from safety clothing to insulation and blankets.	
Vinyl-clear (NOT FR)	CV	20 mil.	54"	CLEAR	Clear vinyl, not flame retardant, provides no UV protection. Used for covers and curtains. No UV protection-not for welding.	
Vinyl-clear CFM (UV) (CFM)	CV-FR	20 mil.	54"	CLEAR	Clear vinyl — flame retardant. Meets California Fire Marshall specifications.	
Vinyl-coated fiberglass	VCF	12	48"	GREEN, YELLOW	Good for welding curtains. Resistant to flame, mildew, acid, fungus, oil, and solvents. Not transparent.	
Vinyl-coated nylon (NOT FR)	VCN	18	60"	ASST.	Not flame retardant. Resists mildew, fungus, and oil. Not transparent.	
Vinyl-laminated polyester (CFM)	VLP	13–14 oz.	60"	ASST.	Vinyl-laminated polyester. Meets California Fire Marshall specifications. Not transparent.	
Weldview	WV	13–14 mil.	62"	SMOKE GREY, GREEN, BLUE ORANGE/RED/NAVY	Provides optical protection and spark containment. California Fire Marshall approved. Used in curtains. Flame resistant.	
Wool lining	OWL	11	36" tubular	GREY	Wool lining that provides good thermal protection when used in gloves and mittens.	
Zetex®	Z	35	60"	WHITE	Made from a highly textured form of silica, with one side specially coated for better molten splash resistance. Continuous temperatures up to 1000°F (for clothing and handwear).	
Zetex Plus®	ZP	35	60"	TAN	High temperature fabric. Provides excellent resistance to flames, sparks, and molten splash. Highly texturized silica-based fabric processed to withstand continuous temperatures up to 1800°F.	
Zirpro™ wool	ZW-26	26	60"	NAVY & ORANGE	100% wool. Zirpro™ treated. Highly effective as a liner for coats, gloves, and mittens.	

UPS Ground
Guaranteed Day-Definite Delivery
For commercial shipments originating in 60076

Jackets, Coats & Coveralls (Chest Sizes)							
S	M	L	XL	XXL	XXXL	XXXXL	XXXXXL
36-38	40-42	44-46	48-50	52-54	56-58	60-62	64-66
Pants (Waist Sizes)							
S	M	L	XL	XXL	XXXL	XXXXL	XXXXXL
28-30	32-34	36-38	40-42	44-46	48-50	52-54	56-58

Guide to measuring for proper fit of garments
W (Waist)Keep tape snug, not too tight.
SL (Sleeve length)Base of neck to wrist with arm extended outward.
C (Chest)Measure broadest part with tape up under arms.
IS (Inseam)Crotch to top of shoe (not boot) inside of leg.
OS (Outseam)Waist to top of shoe (not boot), outside of leg.
CL (Coat length)Base of collar at back of neck to desired length.

Request our other catalogs to help complete your safety product lines.

Arc Flash Protection

- NFPA 70E/ASTM F1506
- Arc Flash Kits
- Insulated Gloves
- Face Shields
- Work Wear
- +Much More!

The Power of CarbonX®

- Undergarments
- Work Wear
- Sleeves
- Hoods
- Blankets
- +Much More!

MechFlex™

- Mechanics' Gloves
- Ultimate Comfort
- Ultimate Dexterity
- Professional Performance
- Custom Designs
- +Much More!

Fireguard®

- NFPA 1971
- Fire Gloves
- Blankets
- Fire Knit Hoods
- +Much More!

Ronco

- Storage Bags
- Respirator Bags
- Duffel Bags
- Gear Bags
- Fanny Packs
- Utility Belt Pouch
- Pocket Pouch
- Haz-Mat Bags
- +Much More!

LIABILITY STATEMENT AND DISCLAIMER OF WARRANTIES

Seller's and manufacturer's only obligation shall be to replace such quantity of the product proven to be defective. Neither seller nor manufacturer shall be liable for any injury, loss or damage, direct or consequential, arising out of the use of or the inability to use the product. Before using, user shall determine the suitability of the product for his intended use, and user assumes all risk and liability whatsoever in connection therewith. Therefore, the buyer should make a careful analysis of the use for which these products are purchased. It will be the buyer's responsibility to determine whether these products will adequately protect the wearer in the environment in which they are to be used.

We cannot anticipate all conditions under which this information and our products, or the products of other manufacturers in combination with our products, may be used. Users are advised to make their own test to determine the safety and suitability of each such product or product combination for their own safety purposes. Swatches are available for testing purposes. Temperatures, where stated, are merely guidelines, as each application varies in duration of exposure.

Statements or recommendations not contained herein shall have no force or effect unless in an agreement signed by officers of seller and manufacturer.

Glacier Wear™, Mechflex™ and Fireguard® are trade marks of Chicago Protective Apparel Inc., Crosstech® and Crosstech® Direct Grip® are registered trademarks of W.L. Gore & Associates. Kevlar®, Cordura®, and Nomex® are registered trademarks of E.I. Dupont DeNemours & Co. Zetex® and Zetex Plus® are registered trademarks of Newtex Industries. PBI® is a registered trademark of Hoechst Celanese Corporation. Velcro® is a registered trademark of Velcro USA Companies. Fiberglass is a registered trademark of Owens Corning Corporation. Indura®, Indura® Ultra Soft®, Modaquilt® Vinex® and FR-7A® are registered trademarks of Westex Inc. Proban® is a registered trademark of Albright & Wilson Ltd. Lexan® is a registered trademark of General Electric Company. Vertex® is a registered trademark of Amatex. Hot Not® is a registered trademark of ESP Inc. Zirpro™ is a trademark of Mt. Jefferson Woolen Division of Delong Sportswear Inc. CarbonX® is a registered trademark of Chapman Innovations.



Chicago Protective Apparel, Inc.

3425 Cleveland Street
Skokie, Illinois 60076
Phone (847) 674-7900
Local Fax (847) 674-7906
Long Distance Fax (800) 845-6833
www.chicagoprotective.com
sales@chicagoprotective.com

Safeguard America, LLC

114 Pierce Street
Berlin, Wisconsin 54923
Phone (920) 361-2112
Fax (920) 361-0415
www.safeguardamerica.com
safeguard@charterinternet.net